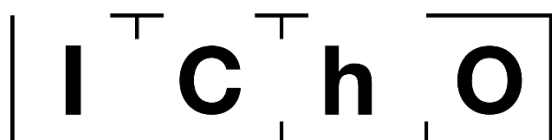


# THEORETICAL EXAM




**51st — International  
Chemistry Olympiad  
France — Paris — 2019**

Making science together!

2019-07-26



 Liberté • Égalité • Fraternité RÉPUBLIQUE FRANÇAISE	MINISTÈRE DE L'ÉDUCATION NATIONALE ET DE LA JEUNESSE	MINISTÈRE DE L'ENSEIGNEMENT SUPÉRIEUR, DE LA RECHERCHE ET DE L'INNOVATION
---	---	--

## General instructions

- This theoretical exam booklet contains 61 pages.
- You may begin writing as soon as the Start command is announced.
- You have 5 hours to complete the exam.
- All results and answers must be clearly written in pen in their respective designated areas on the exam papers. Answers written outside the answer boxes will not be graded.
- If you need paper for roughwork, use the back of the exam sheets. Remember that nothing outside the designated areas will be graded.
- Use only the pen and calculator provided.
- The official English version of the exam booklet is available upon request and serves for clarification only.
- If you need to leave the exam room (to use the toilet or have a snack), wave the corresponding IChO card. An exam supervisor will come to accompany you.
- For multiple-choice questions: if you want to change your answer, fill the answer box completely and then make a new empty answer box next to it.
- The supervisor will announce a 30-minute warning before the final Stop command is called.
- You must stop your work immediately when the Stop command is announced. Failure to stop writing by  $\frac{1}{2}$  minute or longer will lead to nullification of your theoretical exam.
- After the Stop command has been announced, place your exam booklet back in your exam envelope and then wait at your seat. The exam supervisor will come to seal the envelope in front of you and collect it.

**GOOD LUCK!**

## Table of Contents

This theoretical exam is composed of 9 independent problems, as follows. Their relative weight is indicated in parenthesis.

Problem T1: Infinite well and butadiene	(6%)	p. 8
Problem T2: Hydrogen production by water splitting	(7%)	p. 13
Problem T3: About silver chloride	(5%)	p. 20
Problem T4: From black powder to the discovery of iodine	(7%)	p. 25
Problem T5: Complexes for the formation of nanomachines	(8%)	p. 31
Problem T6: Characterisation of a block-copolymer	(8%)	p. 40
Problem T7: Ring motion in a [2]catenane	(6%)	p. 48
Problem T8: Identification and synthesis of inositols	(6%)	p. 53
Problem T9: Synthesis of levobupivacaine	(7%)	p. 58

## Physical constants and equations

In these tasks, we assume the activities of all aqueous species to be well approximated by their respective concentration in mol L<sup>-1</sup>. To further simplify formulas and expressions, the standard concentration  $c^\circ = 1 \text{ mol L}^{-1}$  is omitted.

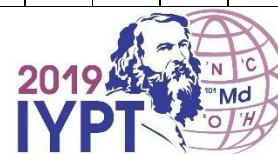
Avogadro's constant:	$N_A = 6.022 \cdot 10^{23} \text{ mol}^{-1}$
Universal gas constant:	$R = 8.314 \text{ J mol}^{-1} \text{ K}^{-1}$
Standard pressure:	$p^\circ = 1 \text{ bar} = 10^5 \text{ Pa}$
Atmospheric pressure:	$P_{\text{atm}} = 1 \text{ atm} = 1.013 \text{ bar} = 1.013 \cdot 10^5 \text{ Pa}$
Zero of the Celsius scale:	273.15 K
Faraday constant:	$F = 9.6485 \cdot 10^4 \text{ C mol}^{-1}$
Watt:	$1 \text{ W} = 1 \text{ J s}^{-1}$
Kilowatt hour:	$1 \text{ kWh} = 3.6 \cdot 10^6 \text{ J}$
Planck constant:	$h = 6.6261 \cdot 10^{-34} \text{ J s}$
Speed of light in vacuum:	$c = 2.998 \cdot 10^8 \text{ m s}^{-1}$
Elementary charge:	$e = 1.6022 \cdot 10^{-19} \text{ C}$
Electron-volt	$1 \text{ eV} = 1.6022 \cdot 10^{-19} \text{ J}$
Electrical power:	$P = \Delta E \times I$
Power efficiency:	$\eta = P_{\text{obtained}}/P_{\text{applied}}$
Planck-Einstein relation:	$E = hc/\lambda = h \nu$
Ideal gas equation:	$pV = nRT$
Gibbs free energy:	$G = H - TS$
	$\Delta_r G^\circ = -RT \ln K^\circ$
	$\Delta_r G^\circ = -n F E_{\text{cell}}^\circ$
	$\Delta_r G = \Delta_r G^\circ + RT \ln Q$
Reaction quotient $Q$ for a reaction $a \text{ A(aq)} + b \text{ B(aq)} = c \text{ C(aq)} + d \text{ D(aq)}$ :	$Q = \frac{[\text{C}]^c [\text{D}]^d}{[\text{A}]^a [\text{B}]^b}$
Henderson–Hasselbalch equation:	$\text{pH} = \text{p}K_a + \log \frac{[\text{A}^-]}{[\text{AH}]}$
Nernst–Peterson equation:	$E = E^\circ - \frac{RT}{zF} \ln Q$
where $Q$ is the reaction quotient of the reduction half-reaction	at $T = 298 \text{ K}$ , $\frac{RT}{F} \ln 10 \approx 0.059 \text{ V}$
Beer–Lambert law:	$A = \varepsilon l c$
Rate laws in integrated form:	
- Zero order:	$[\text{A}] = [\text{A}]_0 - kt$
- First order:	$\ln[\text{A}] = \ln[\text{A}]_0 - kt$
- Second order:	$1/[\text{A}] = 1/[\text{A}]_0 + kt$
Half-life for a first order process:	$\frac{\ln 2}{k}$
Number average molar mass $M_n$ :	$M_n = \frac{\sum_i N_i M_i}{\sum_i N_i}$
Mass average molar mass $M_w$ :	$M_w = \frac{\sum_i N_i M_i^2}{\sum_i N_i M_i}$
Polydispersity index $I_p$ :	$I_p = \frac{M_w}{M_n}$

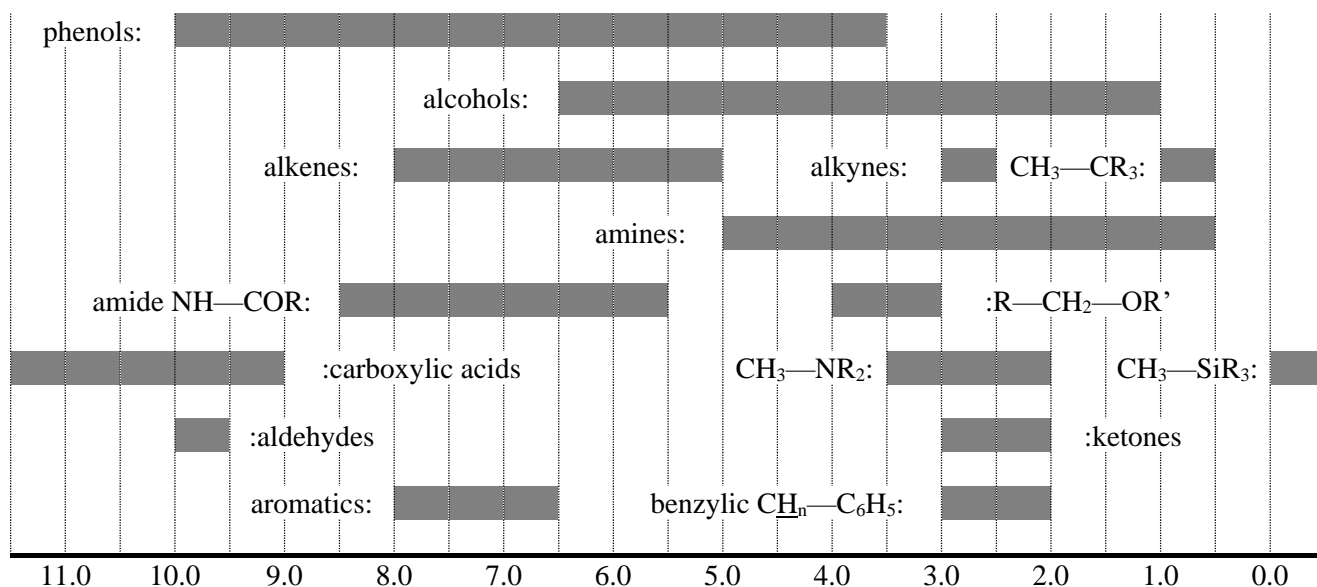
## Periodic table

1 H 1.008	2 He 4.003																
3 Li 6.94	4 Be 9.01											5 B 10.81	6 C 12.01	7 N 14.01	8 O 16.00	9 F 19.00	10 Ne 20.18
11 Na 22.99	12 Mg 24.31	3	4	5	6	7	8	9	10	11	12	13 Al 26.98	14 Si 28.09	15 P 30.97	16 S 32.06	17 Cl 35.45	18 Ar 39.95
19 K 39.10	20 Ca 40.08	21 Sc 44.96	22 Ti 47.87	23 V 50.94	24 Cr 52.00	25 Mn 54.94	26 Fe 55.85	27 Co 58.93	28 Ni 58.69	29 Cu 63.55	30 Zn 65.38	31 Ga 69.72	32 Ge 72.63	33 As 74.92	34 Se 78.97	35 Br 79.90	36 Kr 83.80
37 Rb 85.47	38 Sr 87.62	39 Y 88.91	40 Zr 91.22	41 Nb 92.91	42 Mo 95.95	43 Tc -	44 Ru 101.1	45 Rh 102.9	46 Pd 106.4	47 Ag 107.9	48 Cd 112.4	49 In 114.8	50 Sn 118.7	51 Sb 121.8	52 Te 127.6	53 I 126.9	54 Xe 131.3
55 Cs 132.9	56 Ba 137.3	57-71 La-Lu	72 Hf 178.5	73 Ta 180.9	74 W 183.8	75 Re 186.2	76 Os 190.2	77 Ir 192.2	78 Pt 195.1	79 Au 197.0	80 Hg 200.6	81 Tl 204.4	82 Pb 207.2	83 Bi 209.0	84 Po -	85 At -	86 Rn -
87 Fr -	88 Ra -	89-103 Ac-Lr	104 Rf -	105 Db -	106 Sg -	107 Bh -	108 Hs -	109 Mt -	110 Ds -	111 Rg -	112 Cn -	113 Nh -	114 Fl -	115 Mc -	116 Lv -	117 Ts -	118 Og -

57 La 138.9	58 Ce 140.1	59 Pr 140.9	60 Nd 144.2	61 Pm -	62 Sm 150.4	63 Eu 152.0	64 Gd 157.3	65 Tb 158.9	66 Dy 162.5	67 Ho 164.9	68 Er 167.3	69 Tm 168.9	70 Yb 173.0	71 Lu 175.0
89 Ac -	90 Th 232.0	91 Pa 231.0	92 U 238.0	93 Np -	94 Pu -	95 Am -	96 Cm -	97 Bk -	98 Cf -	99 Es -	100 Fm -	101 Md -	102 No -	103 Lr -



**$^1\text{H}$  NMR****Chemical shifts of hydrogen (in ppm / TMS)****H-H coupling constants (in Hz)**

Hydrogen type	$ J_{ab} $ (Hz)
$\text{R}_2\text{CH}_a\text{H}_b$	4–20
$\text{R}_2\text{H}_a\text{C—CR}_2\text{H}_b$	2–12 if free rotation: 6–8 ax-ax (cyclohexane): 8–12 ax-eq or eq-eq (cyclohexane): 2–5
$\text{R}_2\text{H}_a\text{C—CR}_2\text{—CR}_2\text{H}_b$	if free rotation: < 0.1 otherwise (rigid): 1–8
$\text{RH}_a\text{C=CRH}_b$	<i>cis</i> : 7–12 <i>trans</i> : 12–18
$\text{R}_2\text{C=CH}_a\text{H}_b$	0.5–3
$\text{H}_a(\text{CO})\text{—CR}_2\text{H}_b$	1–3
$\text{RH}_a\text{C=CR—CR}_2\text{H}_b$	0.5–2.5

eq = equatorial, ax = axial

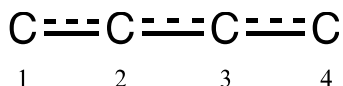
**IR spectroscopy table**

Vibrational mode	$\sigma$ (cm <sup>-1</sup> )	Intensity
alcohol O—H (stretching)	3600-3200	strong
carboxylic acid O—H (stretching)	3600-2500	strong
N—H (stretching)	3500-3350	strong
$\equiv$ C—H (stretching)	3300	strong
=C—H (stretching)	3100-3000	weak
C—H (stretching)	2950-2840	weak
—(CO)—H (stretching)	2900-2800	weak
C $\equiv$ N (stretching)	2250	strong
C $\equiv$ C (stretching)	2260-2100	variable
aldehyde C=O (stretching)	1740-1720	strong
anhydride C=O (stretching)	1840-1800; 1780-1740	weak; strong
ester C=O (stretching)	1750-1720	strong
ketone C=O (stretching)	1745-1715	strong
amide C=O (stretching)	1700-1500	strong
alkene C=C (stretching)	1680-1600	weak
aromatic C=C (stretching)	1600-1400	weak
CH <sub>2</sub> (bending)	1480-1440	medium
CH <sub>3</sub> (bending)	1465-1440; 1390-1365	medium
C—O—C (stretching)	1250-1050	strong
C—OH (stretching)	1200-1020	strong
NO <sub>2</sub> (stretching)	1600-1500; 1400-1300	strong

Problem T1 6%	Question	1	2	3	4	5	6	7	8	9	10	11	Total
	Points	3	4	4	2	3	2	2	4.5	2.5	3	3	33
	Score												

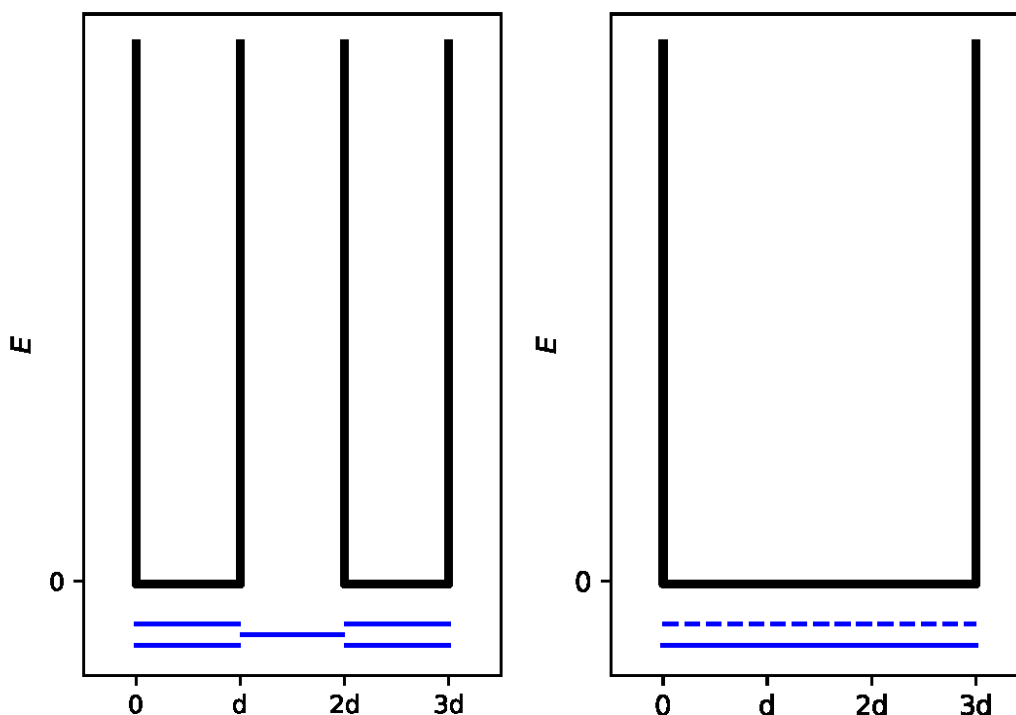
## Problem T1: Infinite well and butadiene

The buta-1,3-diene molecule is often written as  $\text{CH}_2=\text{CH}-\text{CH}=\text{CH}_2$ , with alternating single and double bonds. Nevertheless, its chemical reactivity is not consistent with this description and the  $\pi$  electrons are better described by a distribution along the three bonds:



This system can be modeled as a 1D box (*i.e.* infinite well) where the electrons are free. The energy of an electron in an infinite well of length  $L$  is:  $E_n = \frac{n^2 h^2}{8m_e L^2}$ , where  $n$  is a **non-zero** positive integer.

- Two different models are studied. **Sketch** at least the **three** lowest-energy levels  $E_n$  **for each model** in the respective diagrams, showing how the relative energy levels differ within and between models.



**Model 1 (« localised »):** The  $\pi$  electrons are localised on the terminal bonds and evolve into two separate infinite potential wells of length  $d$ .

**Model 2 (« delocalised »):** The  $\pi$  electrons are delocalised over the whole molecule and evolve into a single infinite potential well of length  $3d$ .



2. **Insert** the  $\pi$  electrons for model 1 into the diagram on P.8 and **express** the **total energy** of the  $\pi$  system in model 1,  $E(1)$ , as a function of  $h$ ,  $m_e$  and  $d$ .

$$E(1) =$$

3. **Insert** the  $\pi$  electrons for model 2 in the diagram on P.8 and **express** the **total energy** of the  $\pi$  system in model 2,  $E(2)$ , as a function of  $h$ ,  $m_e$  and  $d$ .

$$E(2) =$$

The conjugation energy  $\Delta E_c$  is the total energy of the actual  $\pi$  system minus the sum of the energies of ethene (ethylene) molecules involving the same number of electrons.

4. **Express** the conjugation energy  $\Delta E_c$  of buta-1,3-diene, as a function of  $h$ ,  $m_e$  and  $d$ .

$$\Delta E_c =$$

Models 1 and 2 are too simplistic. A new model is outlined below:

5. **Draw** three other resonance structures of buta-1,3-diene using Lewis notation.



To take into account the size of carbon atoms, model 2 is now modified into model 3, as follows:

- the new length of the well is  $L$  and is located between the abscissa 0 and  $L$ ;
- the carbon atoms are located at the abscissas  $L/8$ ;  $3L/8$ ;  $5L/8$  and  $7L/8$ .

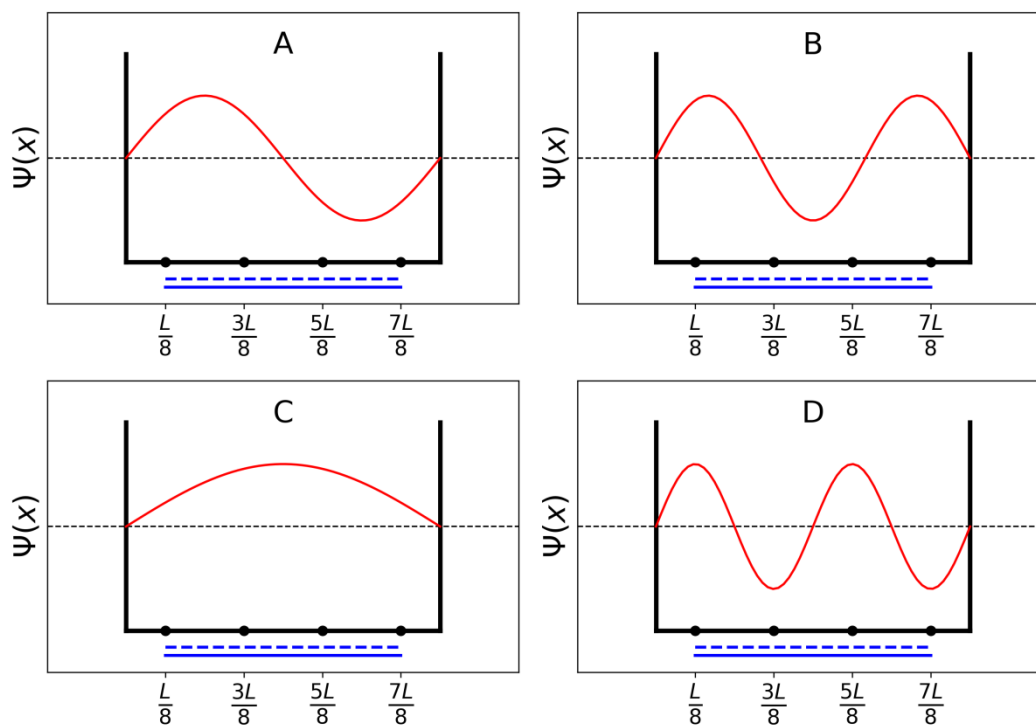
For each level  $n$ , the  $\pi$  wavefunction is:

$$\psi_n(x) = \sqrt{\frac{2}{L}} \sin\left(\frac{n\pi x}{L}\right)$$

and the  $\pi$  electron density for a system with  $N$   $\pi$  electrons is:

$$\rho(x) = 2 \sum_{i=1}^{N/2} |\psi_i(x)|^2$$

The four  $\pi$  wavefunctions, which correspond to the molecular orbitals of the  $\pi$  system, are shown below (arbitrary order).



6. **Order** the energies of the four  $\pi$  wavefunctions ( $E_A$ ,  $E_B$ ,  $E_C$  and  $E_D$ ).

<
<
<

7. **Give** the labels (A, B, C or D) of the orbitals that are filled with electrons in buta-1,3-diene.

8. Within model 3, **give** the values of the  $\pi$  wavefunctions  $\psi_n$  for occupied levels at positions 0,  $L/4$  and  $L/2$ , for  $n = 1$  and  $n = 2$ , as a function of  $L$ .

$$\psi_1(0) =$$

$$\psi_1\left(\frac{L}{4}\right) =$$

$$\psi_1\left(\frac{L}{2}\right) =$$

$$\psi_2(0) =$$

$$\psi_2\left(\frac{L}{4}\right) =$$

$$\psi_2\left(\frac{L}{2}\right) =$$

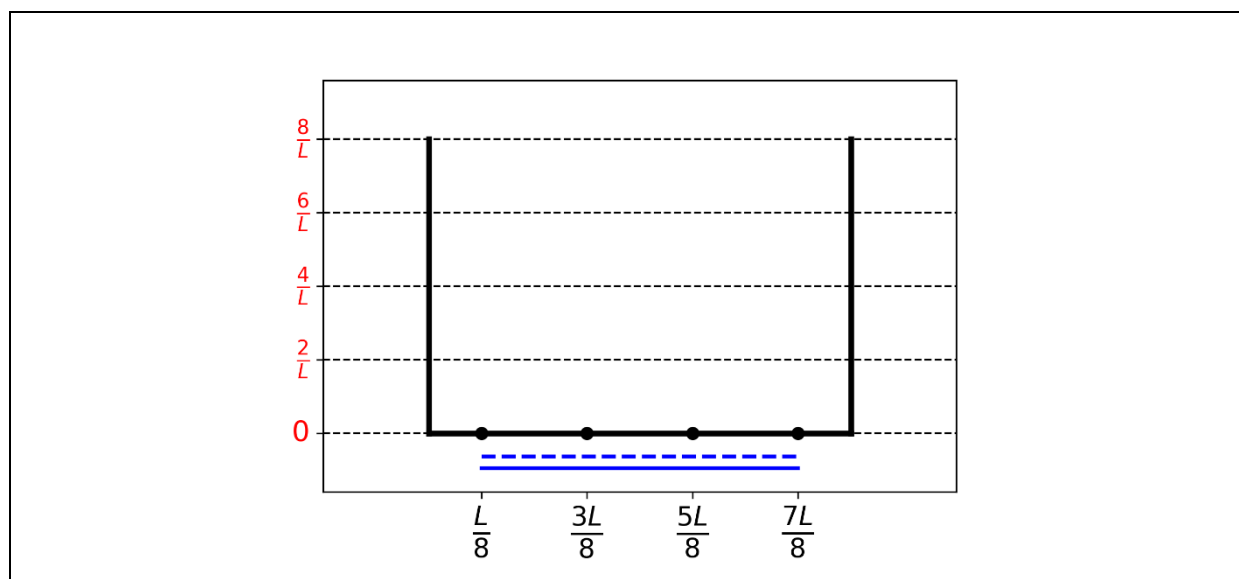
9. Within model 3, **give** the value of the  $\pi$  electron density  $\rho$  at positions 0,  $L/4$  and  $L/2$ .

$$\rho(0) =$$

$$\rho\left(\frac{L}{4}\right) =$$

$$\rho\left(\frac{L}{2}\right) =$$

10. **Draw** the  $\pi$  electron density between 0 and  $L$ .



11. **Order** the following carbon to carbon (CC) bonds (labelled B1, B2, ..., B5) by **increasing bond length**, using the symbols = or <:

- B1: C1C2 bond in the buta-1,3-diene molecule
- B2: C2C3 bond in the buta-1,3-diene molecule
- B3: C3C4 bond in the buta-1,3-diene molecule
- B4: CC bond in the ethane molecule
- B5: CC bond in the ethene molecule

Problem	Question	1	2	3	4	5	6	7	8	9	10	Total
T2	Points	1	4	2	3	3	6	4	1	8	2	34
7%	Score											

## Problem T2: Hydrogen production by water splitting

Data:

Compound	H <sub>2</sub> (g)	H <sub>2</sub> O(l)	H <sub>2</sub> O(g)	O <sub>2</sub> (g)
$\Delta_f H^\circ$ (kJ mol <sup>-1</sup> )	0	-285.8	-241.8	0
$S_m^\circ$ (J mol <sup>-1</sup> K <sup>-1</sup> )	130.6	69.9	188.7	205.2

Molecular hydrogen (H<sub>2</sub>) can be used as an alternative to carbon dioxide-emitting fuels. Hence, lowering the cost and the environmental impact of its production is a major challenge. In this field, water splitting has the potential to produce hydrogen.

1. **Write down** the balanced chemical equation for the splitting of **liquid** water H<sub>2</sub>O(l) **using a stoichiometric coefficient of 1 for water**.

2. Using only the thermodynamic data given in the table, **justify numerically** whether this reaction is thermodynamically favorable at 298 K (*i.e.* whether the reaction is spontaneous or non-spontaneous).

Calculations:

Reaction thermodynamically favorable?

☐ Yes

☐ No

Water splitting can be achieved by electrolysis in an electrochemical cell (electrolytic cell) using two electrodes in an acidic water bath, connected by a generator (Fig. 1). Gas bubbles are formed at both electrodes.

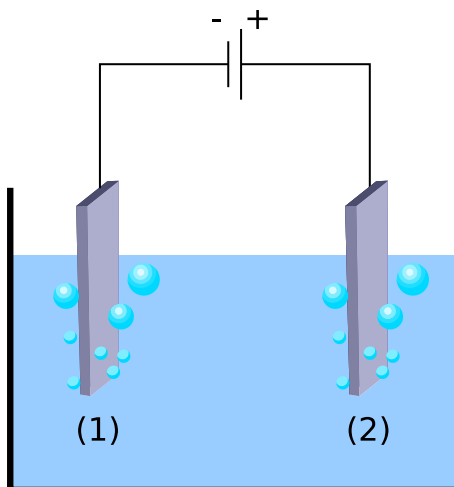


Fig. 1 – Water splitting electrochemical cell.

3. **Write down** the balanced net electrochemical half-reactions occurring at each electrode.

Half-reaction occurring at electrode (1):

Half-reaction occurring at electrode (2):

4. Using only the thermodynamic data given in the table (or question 2), **derive** the condition on the applied voltage between electrodes  $\Delta E_{\text{applied}}$  compared to a value  $\Delta E_{\text{th}}$  to determine whether the process is thermodynamically favorable at 298 K, with all reactants and products are in their standard state. **Mark** the correct condition and **give** the numerical value **correct to 3 decimal places**.

Calculation:

- ☐  $\Delta E_{\text{applied}} = \Delta E_{\text{th}}$   
☐  $\Delta E_{\text{applied}} > \Delta E_{\text{th}}$   
☐  $\Delta E_{\text{applied}} < \Delta E_{\text{th}}$

$\Delta E_{\text{th}} = \dots\dots\dots$  V (correct to 3 decimal places)

*If you could not calculate  $\Delta E_{\text{th}}$ , the value 1.200 V can be used in the rest of the problem.*

Experimentally, a higher voltage is needed to observe water splitting. For a given Pt cathode, the minimum voltage required to observe water splitting,  $\Delta E_{\min}$ , depends on the nature of the anode, as shown in the table below:

Anode	$\Delta E_{\min}$ (V)
IrO <sub>x</sub>	1.6
NiO <sub>x</sub>	1.7
CoO <sub>x</sub>	1.7
Fe <sub>2</sub> O <sub>3</sub>	1.9

The difference between  $\Delta E_{\min}$  and  $\Delta E_{\text{th}}$  is responsible for losses in the device.

5. **Give** the expression for the device power efficiency  $\eta_{\text{elec}}$  (fraction of the power used for water splitting) as a function of  $\Delta E_{\text{th}}$  and  $\Delta E_{\min}$ . Assuming an identical current value  $I$ , **calculate** the water electrolysis power efficiency when a Pt cathode and a Fe<sub>2</sub>O<sub>3</sub> anode are used. **State** which is the most efficient anode (*i.e.* IrO<sub>x</sub>, NiO<sub>x</sub>, CoO<sub>x</sub> or Fe<sub>2</sub>O<sub>3</sub>).

$\eta_{\text{elec}} =$

Power efficiency when Pt and Fe<sub>2</sub>O<sub>3</sub> electrodes are used:

$\eta_{\text{elec}} =$  %

Most efficient anode:

*If you could not calculate  $\eta_{\text{elec}}$ , the value  $\eta_{\text{elec}} = 75\%$  can be used in the rest of the problem.*

An alternative to water electrolysis is direct photocatalytic water splitting. This process uses a semiconductor that can be activated by absorbing light.

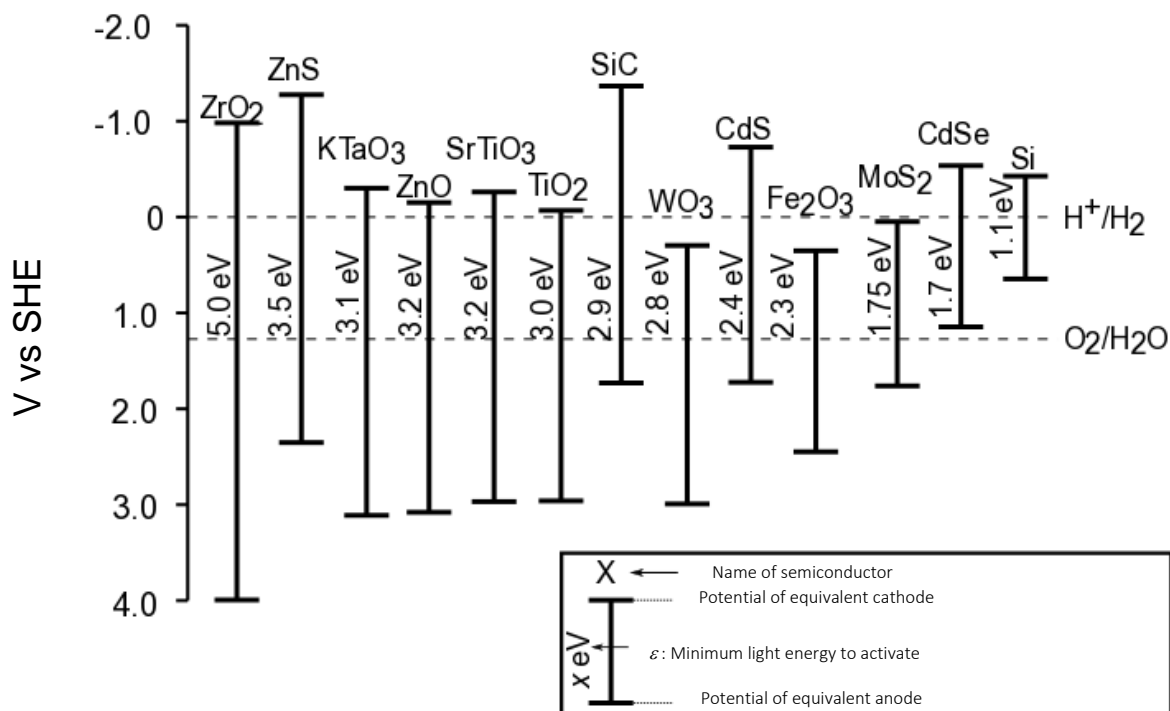


Fig. 2 – Activation condition and equivalent electrode potentials of different semiconductors. Dashed lines correspond to water oxidation and reduction potentials. SHE = Standard Hydrogen Electrode.

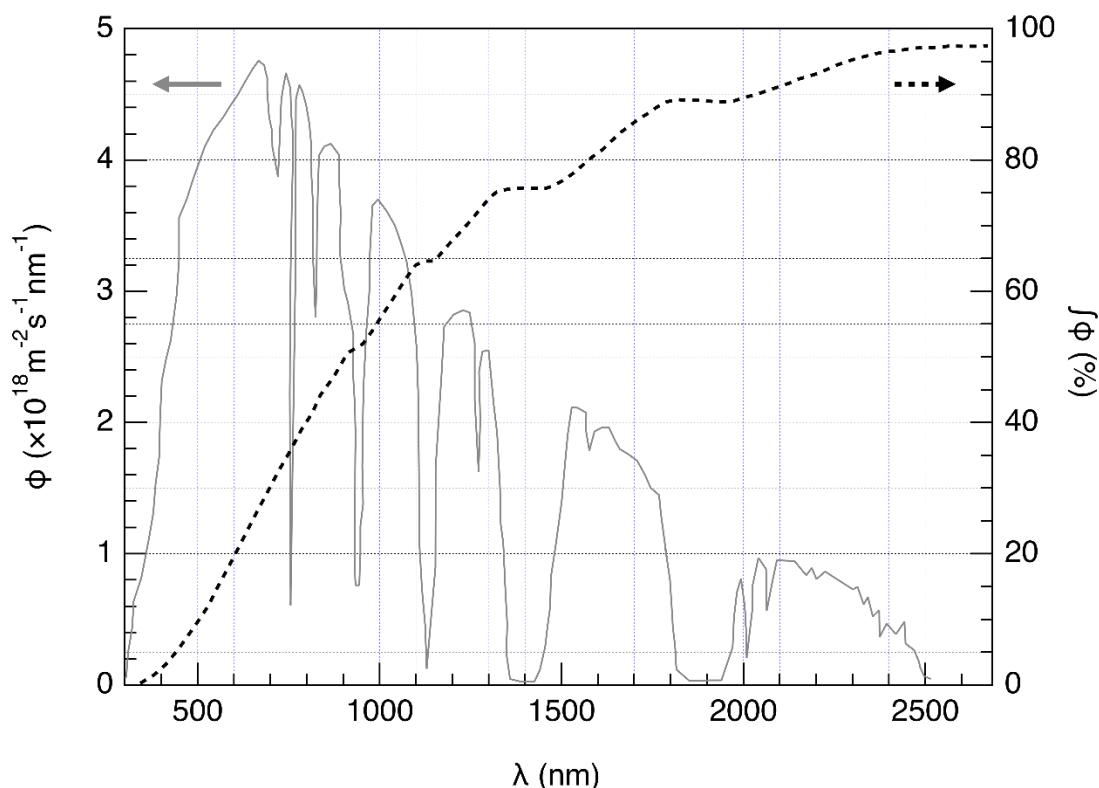


Fig. 3 – Left axis: Spectral distribution of the solar photon flux  $\phi$ . The photon flux is the number of photons per unit area per unit time arriving on the semiconductor.  
Right axis and dashed line: cumulative photon flux (i.e. fraction of the photon flux with smaller wavelength).



6. **Estimate** the fraction of the solar photon flux that can activate the following semiconductors:  $\text{TiO}_2$ ,  $\text{CdS}$  and  $\text{Si}$ . **State** explicitly **the equations and units** used for the calculation.

Explanation / calculation:

	Approximate fraction
$\text{TiO}_2$	%
$\text{CdS}$	%
$\text{Si}$	%

The activation of the semiconductor results in a modification of the surface potentials, so that it can be seen as two electrodes of different potentials.

7. Using the data in Fig 2, **choose** the semiconductor(s) in the following list that, once activated, can play both roles of anode and cathode for the water splitting reaction.

<input type="checkbox"/> $\text{ZrO}_2$	<input type="checkbox"/> $\text{ZnO}$	<input type="checkbox"/> $\text{TiO}_2$	<input type="checkbox"/> $\text{WO}_3$
<input type="checkbox"/> $\text{CdS}$	<input type="checkbox"/> $\text{Fe}_2\text{O}_3$	<input type="checkbox"/> $\text{CdSe}$	<input type="checkbox"/> $\text{Si}$

8. **Give** the semiconductor that, used as both cathode and anode, is expected to be the most efficient semiconductor for water splitting with solar light shining.

The evolution of  $\text{H}_2$  and  $\text{O}_2$  when a semiconductor is irradiated by simulated solar light at  $T = 25\text{ }^\circ\text{C}$  at  $p_{\text{atm}}$  was recently studied. Using an incident power light of  $P = 1.0\text{ kW m}^{-2}$  and a photoelectrode with a  $S = 16\text{ mm}^2$  surface, the production of  $V = 0.37\text{ cm}^3$  of  $\text{H}_2(\text{g})$  was measured after  $\Delta t = 1$  hour of reaction.

9. **Calculate** the power efficiency  $\eta_{\text{direct}}$  of the conversion.

Calculation:

$\eta_{\text{direct}} =$  %

*If you could not calculate  $\eta_{\text{direct}}$ , the value  $\eta_{\text{direct}} = 10\%$  can be used in the rest of the problem.*

Two modes of converting solar energy to hydrogen can thus be compared: direct photocatalysis and indirect photo-electrolysis combining a photovoltaic panel with an electrolyser. The efficiency of photovoltaic panels on the market is around  $\eta_{\text{panels}} = 20\%$ .

10. **Compare** the power efficiencies of the two modes,  $\eta_{\text{direct}}$  and  $\eta_{\text{indirect}}$ , using  $\text{Fe}_2\text{O}_3$  and Pt electrodes for the electrolysis.

Calculation:

☐  $\eta_{\text{direct}} > \eta_{\text{indirect}}$

☐  $\eta_{\text{direct}} \approx \eta_{\text{indirect}}$

☐  $\eta_{\text{direct}} < \eta_{\text{indirect}}$

Problem	Question	1	2	3	4	5	6	7	8	9	10	11	12	Total
T3	Points	1	3	3	3	4	2	7	2	2	3	4	6	40
5%	Score													

## Problem T3: About silver chloride

### Data at 298 K:

$$pK_{s1}(\text{AgCl}) = 9.7; pK_{s2}(\text{Ag}_2\text{CrO}_4) = 12$$

Formation constant of the complex  $[\text{Ag}(\text{NH}_3)_n]^+$ :  $\beta_n = 10^{7.2}$

Potentials against the standard hydrogen electrode:

Standard potential of  $\text{Ag}^+(\text{aq})/\text{Ag}(\text{s})$ :  $E^\circ(\text{Ag}^+(\text{aq})/\text{Ag}(\text{s})) = 0.80 \text{ V}$

Apparent potential of  $\text{O}_2(\text{aq})/\text{HO}^-(\text{aq})$  (in seawater):  $E'(\text{O}_2(\text{aq})/\text{HO}^-(\text{aq})) = 0.75 \text{ V}$

### Part A: Quotes from a chemistry lesson by Louis Joseph Gay-Lussac

The following quotes from a chemistry lesson by Louis Joseph Gay-Lussac (French chemist and physicist, 1778–1850) deal with some properties of silver chloride.

**Quote A:** “I will now talk about silver chloride, a milk-white solid. It is easily obtained by pouring hydrochloric acid into an aqueous solution of silver nitrate.”

**Quote B:** “This salt has no taste since it is insoluble.”

**Quote C:** “This compound is completely insoluble in alcohol and even in acids, except in concentrated hydrochloric acid which dissolves it readily.”

**Quote D:** “On the other hand, silver chloride is highly soluble in aqueous solution of ammonia.”

**Quote E:** “Then, we can make silver chloride appear again by adding an acid which reacts with ammonia.”

**Quote F:** “If you take a bowl made of silver to evaporate salty seawater, you will get impure sodium chloride, mixed with a milk-white solid.”

1. **Quote A:** Write the balanced chemical equation for the synthesis of  $\text{AgCl}(\text{s})$ .

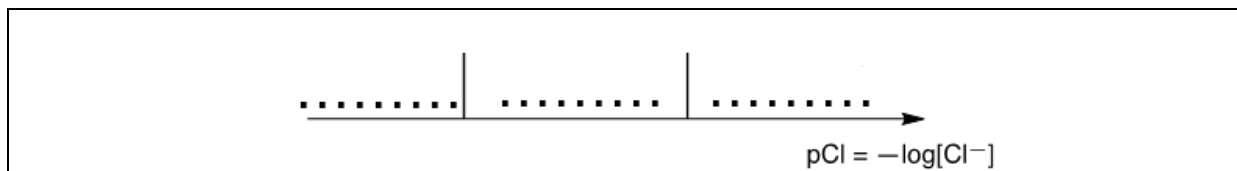
2. **Quote B:** Calculate the solubility  $s$  of  $\text{AgCl}(\text{s})$  in water at 298 K in  $\text{mol L}^{-1}$ .

Calculation:

$s =$ 

$\text{mol L}^{-1}$

3. **Quote C:** In a highly concentrated solution of chloride ions  $\text{Cl}^-$ , a well-defined complex of stoichiometry 1:2 is formed. On the (qualitative) axis below in the box (with  $\text{pCl}$  increasing from left to right), **insert** into each domain (indicted by ..... in the diagram) the formula of the respective silver-containing species that is predominant (or exists, for solids).  $\text{pCl}$  values at the boundaries are not expected.



**Quote D:** When ammonia is added to silver chloride, a well-defined complex of stoichiometry  $n$  is formed.

4. **Write** the balanced chemical equation corresponding to the synthesis of the complex  $[\text{Ag}(\text{NH}_3)_n]^+$  from silver chloride and **calculate** the corresponding equilibrium constant  $K$ .

Equation:

Calculation of  $K$ :

$$K =$$

*If you could not calculate  $K$ , the following value can be used in the rest of the problem:  $K = 10^{-3}$*

5. Ammonia is added to 0.1 mol of silver chloride in 1 L of water until the last grain of solid disappears. At this moment,  $[\text{NH}_3] = 1.78 \text{ mol L}^{-1}$ . **Determine** the stoichiometry of the complex ignoring dilution effects.

Calculation:

$$n =$$

6. **Write** the balanced chemical equation corresponding to **quote E**.

7. Assuming that seawater is slightly basic and rich in dioxygen, and that silver metal can reduce dioxygen in such conditions, **write** a balanced chemical equation corresponding to the formation of the solid mentioned in **quote F**. **A stoichiometric coefficient of 1 will be chosen for dioxygen.** **Calculate** its equilibrium constant  $K$  at 298 K.

Equation:

Calculation:

$K =$

**Part B: The Mohr method**

The Mohr method is based on the colorimetric titration of  $\text{Cl}^-$  by  $\text{Ag}^+$  in the presence of potassium chromate ( $2\text{K}^+$ ,  $\text{CrO}_4^{2-}$ ). Three drops ( $\sim 0.5$  mL) of a  $\text{K}_2\text{CrO}_4$  solution at about  $7.76 \cdot 10^{-3} \text{ mol L}^{-1}$  are added to  $V_0 = 20.00$  mL of a sodium chloride solution of unknown concentration  $C_{\text{Cl}}$ . This solution is then titrated by silver nitrate ( $\text{Ag}^+$ ,  $\text{NO}_3^-$ ) at  $C_{\text{Ag}} = 0.050 \text{ mol L}^{-1}$ , which immediately leads to the formation of solid **A**. A red precipitate (solid **B**) appears at  $V_{\text{Ag}} = 4.30$  mL.

8. **Write** the balanced chemical equations of the two reactions occurring during the experiment.  
**Calculate** the corresponding equilibrium constants.

$$K^\circ_1 =$$

$$K^\circ_2 =$$

9. **Identify** the solids.

Solid **A**:

Solid **B**:

10. **Calculate** the unknown concentration  $C_{\text{Cl}}$  of chloride ions in the sodium chloride solution.

Calculation:

$$C_{\text{Cl}} = \quad \text{mol L}^{-1}$$

*If you could not calculate  $C_{\text{Cl}}$ , the value  $C_{\text{Cl}} = 0.010 \text{ mol L}^{-1}$  can be used in the rest of the problem.*

11. **Calculate** the minimum volume  $V_{\text{Ag}}(\text{min})$  for which  $\text{AgCl}(\text{s})$  precipitates.

Calculation:

$$V_{\text{Ag}}(\text{min}) = \quad \text{mL}$$

12. **Calculate** the residual concentration  $[\text{Cl}^-]_{\text{res}}$  of chloride ions when silver chromate begins to precipitate. **Justify** why  $\text{CrO}_4^{2-}$  is a good titration endpoint indicator by comparing two values.

Calculation:

$$[\text{Cl}^-]_{\text{res}} = \quad \text{mol L}^{-1}$$

$\text{CrO}_4^{2-}$  is a good titration endpoint indicator because:



Problem	Question	1	2	3	4	5	6	7	8	Total
<b>T4</b> 7%	Points	6	9	8	5	6	2	2	12	50
	Score									

## Problem T4: From gunpowder to the discovery of iodine

In the 19<sup>th</sup> century, the French entrepreneur B. Courtois specialised in the production of nitrate **A** ( $\text{M}_\text{A}(\text{NO}_3)_m$ ), used for gunpowder. Initially imported from Asia, **A** was later produced from nitrate **B** ( $\text{M}_\text{B}(\text{NO}_3)_n$ ) using an exchange reaction with compound **C**, obtained from algae.

1. **Find** the formulas of nitrates **A** and **B** knowing that they are anhydrous salts of alkaline or alkaline-earth metals ( $\text{M}_\text{A}$  and  $\text{M}_\text{B}$ ). One of the nitrates contains no more than 1 w% of non-metallic impurities while the other contains  $9 \pm 3$  w% of impurities. The content of metals  $\text{M}_\text{A}$  and  $\text{M}_\text{B}$  in the samples is 38.4 w% and 22.4 w% respectively. **Support** your answer with calculations.

**A:**
and
**B:**

To obtain **A**, 262.2 g of solid compound **C** were added to the solution containing 442.8 g of **B**. **B** is known to be in excess. As a result, 190.0 g of white precipitate **D** were formed and removed by filtration. The filtrate was evaporated, and the obtained solid mixture **E** was heated until the mass of the sample (containing only nitrites,  $\text{NO}_2^-$ ) was constant. The only gaseous product was dioxygen: 60.48 L at 0 °C at 1 atm (dioxygen can be considered as an ideal gas).

2. **Calculate** the composition (in w%) of mixture **E** considering that it contained only compounds **A** and **B** and no other impurities, and that **C** was taken in a pure anhydrous state.

w% of **A**:

and of **B**:

3. **Determine** the formulas of compounds **C** and **D** and **write** the balanced chemical equation for the reaction between **B** and **C**.

**C:**

and **D:**

Equation for the reaction between **B** and **C**:

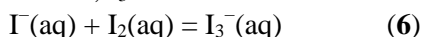
In 1811, when working with algae ashes, Courtois observed that copper vessels were worn out faster than usual. While he was studying this phenomenon, his cat entered the laboratory and spilled the solution of concentrated sulfuric acid on the dry algae ashes: violet vapours instantly came out of the vessel (**1**, sulfuric acid is the oxidising agent): iodine ( $I_2$ ) had just been discovered! Iodine was the cause of the copper corrosion (**2**). However, because of the medicinal applications of iodine, Courtois opened a new manufacture to produce it by reaction of algae with chlorine (**3**).

Nowadays, iodine is prepared from the set of reactants ( $NO_3^-$ ,  $I^-$ ,  $H^+$ ) (**4**) or ( $IO_3^-$ ,  $I^-$ ,  $H^+$ ) (**5**).

4. **Write** balanced chemical equations for reactions **1–5**.

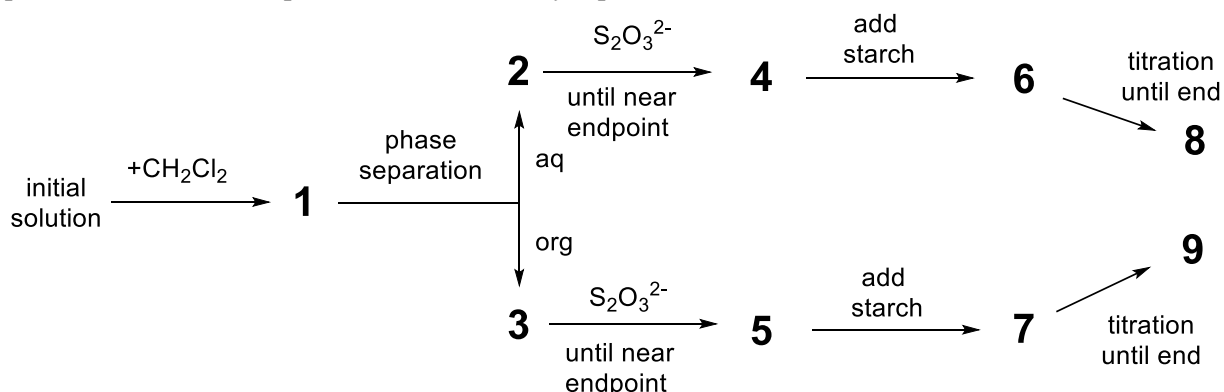
<b>1</b>
<b>2</b>
<b>3</b>
<b>4</b>
<b>5</b>

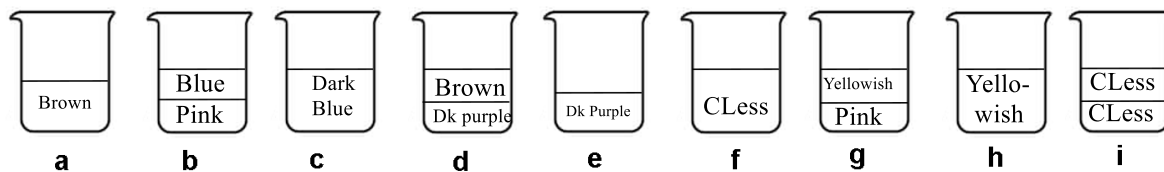
The solubility of iodine is very low in water but significantly increases when iodide ions are added. Together they form ions such as triiodide,  $I_3^-$ :



Equilibrium (**6**) can be studied through the extraction of  $I_2$  with dichloromethane. Indeed,  $I^-$  and  $I_3^-$  do not dissolve in organic solvents but  $I_2$  does and, when extracted, it is 15 times more concentrated in dichloromethane than in water.

The following experiment was performed. To prepare the initial solution, a few crystals of solid iodine were dissolved in 50.0 mL of an aqueous solution of potassium iodide (0.1112 g). Then, 50.0 mL of dichloromethane were added, and the mixture was vigorously shaken until equilibration. After phase separation, each phase was titrated by 16.20 mL (organic phase) and by 8.00 mL (aqueous phase) of the standard aqueous solution of sodium thiosulphate pentahydrate (14.9080 g in 1.000 L of solution) in the presence of starch. The process is schematically represented below:





CLess = colourless Dk = dark

5. **Find** the correspondence between the stages on the scheme (1–9) and the schematic pictures representing them (a–i).

Stages	Picture
<b>1</b>	
<b>2</b>	
<b>3</b>	
<b>4</b>	
<b>5</b>	
<b>6</b>	
<b>7</b>	
<b>8</b>	
<b>9</b>	

6. **Write** balanced chemical equations for the **two** possible chemical reactions in the aqueous phase during the titration involving iodine species and sodium thiosulphate.

7. **Calculate** the mass of iodine used to prepare the initial solution.

$m(\text{I}_2) =$ 

g

8. **Calculate** the equilibrium constant  $K^\circ$  for equilibrium of reaction (6).

$$K^\circ =$$

Problem	Question	1	2	3	4	5	6	7	8	9	10	11	12	Total
<b>T5</b>	Points	3	4	4	2	5	5	4	3	5	2	2	2	41
<b>8%</b>	Score													

## Problem T5: Azobenzene – $\beta$ -cyclodextrin complexes for the formation of nanomachines

Nanomachines are molecular assemblies that enable the transformation of an energy source into a nano-movement for applications such as drug delivery. Numerous nanomachines make use of the isomerisation of azo compounds ( $R-N=N-R'$ ) upon irradiation.

1. **Draw** the stereoisomers of azobenzene ( $H_5C_6-N=N-C_6H_5$ ) and **draw** a line between the two carbon atoms that are the furthest apart. **Compare** these two distances ( $d_{trans}$  and  $d_{cis}$ ) using  $>$  or  $<$ .

<i>trans</i>	<i>cis</i>
Comparison (use $>$ or $<$ ) :	
$d_{trans}$	$d_{cis}$

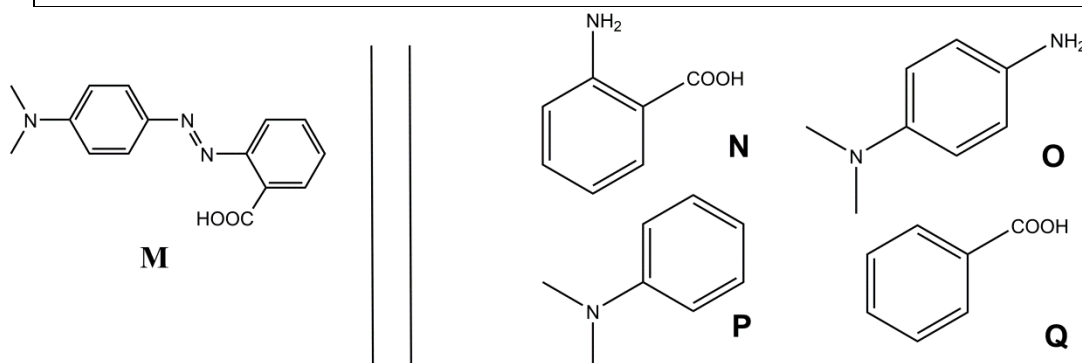


Fig. 1 – Possible reactants for the synthesis of **M**.

2. **M** can be synthesised in two steps from simple reactants (Fig. 1). **Choose** among the suggested reactants (**N** to **Q**) the ones that can provide **M** with very high regioselectivity. Sodium nitrite ( $NaNO_2$ ) in cold aqueous hydrochloric acid is used as a reagent for the first step of the synthesis.

Reactants: \_\_\_\_\_ and \_\_\_\_\_

### Determination of the association constant $K_t$

$\beta$ -cyclodextrin (**C**, Fig. 2) is a cyclic heptamer of glucose, which can form inclusion complexes with azo compounds. In tasks 3 to 6, we will determine by spectroscopy the association constant  $K_t$ , corresponding to the formation of the inclusion complex  $\text{CM}_{\text{trans}}$  as shown in Fig. 2.

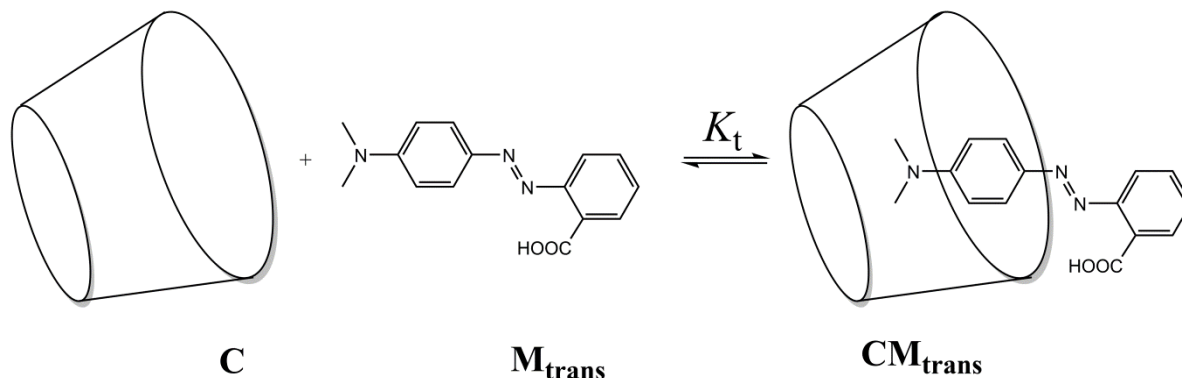


Fig. 2 – Formation of the  $\text{CM}_{\text{trans}}$  inclusion complex.

Several solutions are prepared by mixing **C** and  $\text{M}_{\text{trans}}$  in different proportions to reach initial concentrations  $[\text{C}]_0$  and  $[\text{M}_{\text{trans}}]_0$ . While  $[\text{M}_{\text{trans}}]_0$  is identical for all solutions,  $[\text{C}]_0$  varies. We follow, at a fixed wavelength, the evolution of the difference in absorbance  $\Delta A$  between the absorbance of each solution and the pure  $\text{M}_{\text{trans}}$  solution. We note the molar absorption coefficients of  $\text{CM}_{\text{trans}}$  and  $\text{M}_{\text{trans}}$ ,  $\varepsilon_{\text{CM}_{\text{trans}}}$  and  $\varepsilon_{\text{M}_{\text{trans}}}$ , respectively.  $L$  is the path length of the beam through the sample. The absorbance of **C** ( $\varepsilon_{\text{C}}$ ) is negligible.

3. **Demonstrate** that  $\Delta A = \alpha \cdot [\text{CM}_{\text{trans}}]$  and **express**  $\alpha$  in terms of known constant(s).

Demonstration:

$$\alpha =$$



4. **Demonstrate** that, when **C** is in large excess with respect to **M<sub>trans</sub>** (*i.e.*  $[C]_0 \gg [M_{trans}]_0$ ), the concentration of **C** may be considered as constant,  $[C] \simeq [C]_0$ .

Demonstration:

5. **Demonstrate** that, when **C** is in large excess with respect to **M<sub>trans</sub>** (*i.e.*  $[C]_0 \gg [M_{trans}]_0$ ),  $\Delta A = \alpha \cdot \frac{\beta \cdot [C]_0}{1 + K_t \cdot [C]_0}$  and **express**  $\beta$  in terms of constant(s) and initial concentration(s).

Demonstration:

$$\beta =$$

6. **Determine**  $K_t$  using the following experimental curve (Fig. 3).

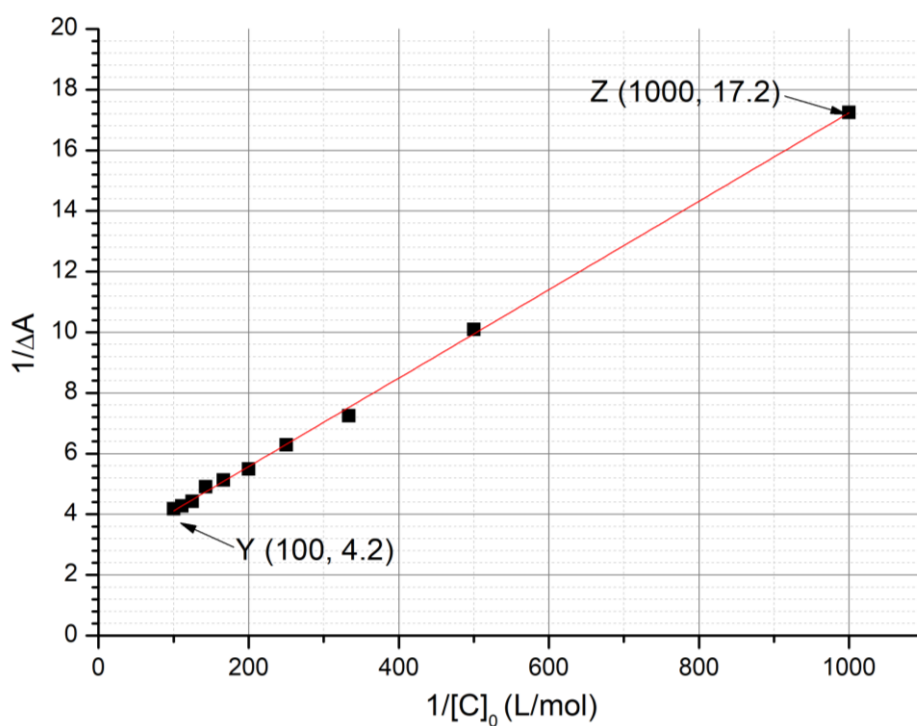


Fig. 3 – Evolution of  $1/\Delta A$  as a function of  $1/[C]_0$ .

Calculations:

$$K_t =$$

### Determination of the association constant $K_c$

In tasks 7 to 9, we will determine by kinetic studies the association constant  $K_c$ , corresponding to the formation of the inclusion complex with  $\mathbf{M}_{\text{cis}}$ ,  $\mathbf{CM}_{\text{cis}}$ . A sample containing only  $\mathbf{M}_{\text{trans}}$  is irradiated, thus producing a known amount of  $\mathbf{M}_{\text{cis}}$ ,  $[\mathbf{M}_{\text{cis}}]_0$ .  $\mathbf{M}_{\text{cis}}$  (free or within the inclusion complex) then thermally isomerises into  $\mathbf{M}_{\text{trans}}$ . In the absence of  $\mathbf{C}$ , the isomerisation follows first order kinetics with a rate constant  $k_1$ . All complexation equilibria are faster than the isomerisation processes. The kinetic scheme corresponding to this experiment is given in Fig. 4.

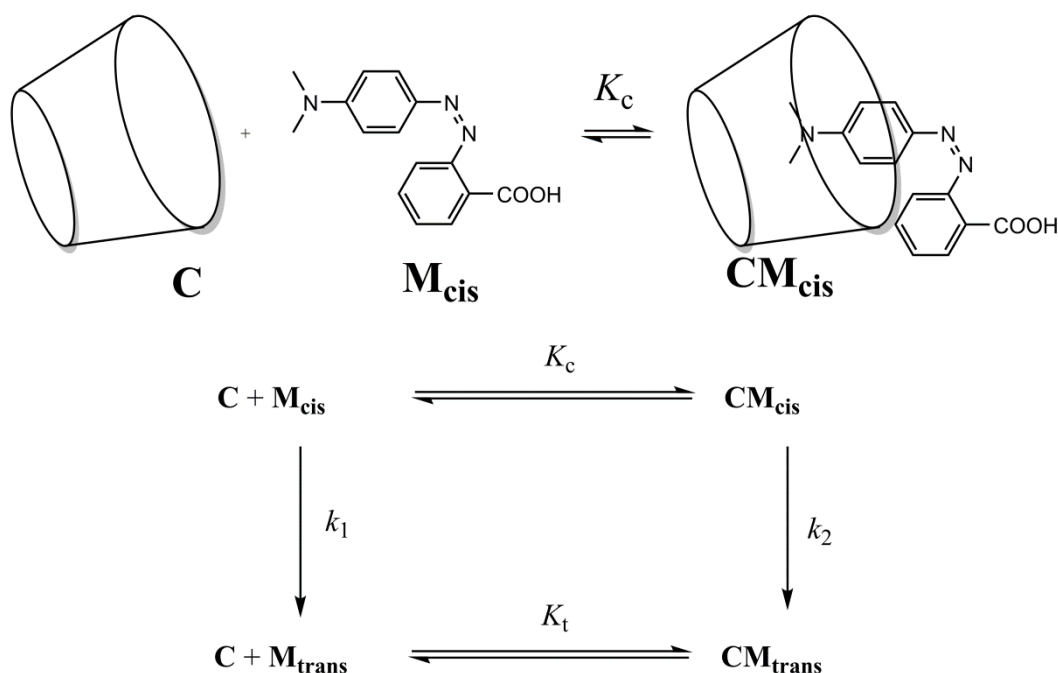


Fig. 4 – Kinetic scheme for the isomerisation of  $\mathbf{M}_{\text{cis}}$  in the presence of  $\mathbf{C}$ .

The rate of disappearance  $r$  for the total amount of  $\mathbf{M}_{\text{cis}}$  (free and complexed) is defined as

$$r = k_1[\mathbf{M}_{\text{cis}}] + k_2[\mathbf{CM}_{\text{cis}}]$$

Experimentally,  $r$  follows an apparent first order kinetic law with an apparent rate constant  $k_{\text{obs}}$ :

$$r = k_{\text{obs}}([\mathbf{M}_{\text{cis}}] + [\mathbf{CM}_{\text{cis}}])$$

7. **Demonstrate** that  $k_{\text{obs}} = \frac{\gamma + \delta \cdot k_2[\mathbf{C}]}{1 + K_c[\mathbf{C}]}$  and **express**  $\gamma$  and  $\delta$  in terms of known constant(s).

Demonstration:

$$\gamma =$$

and

$$\delta =$$

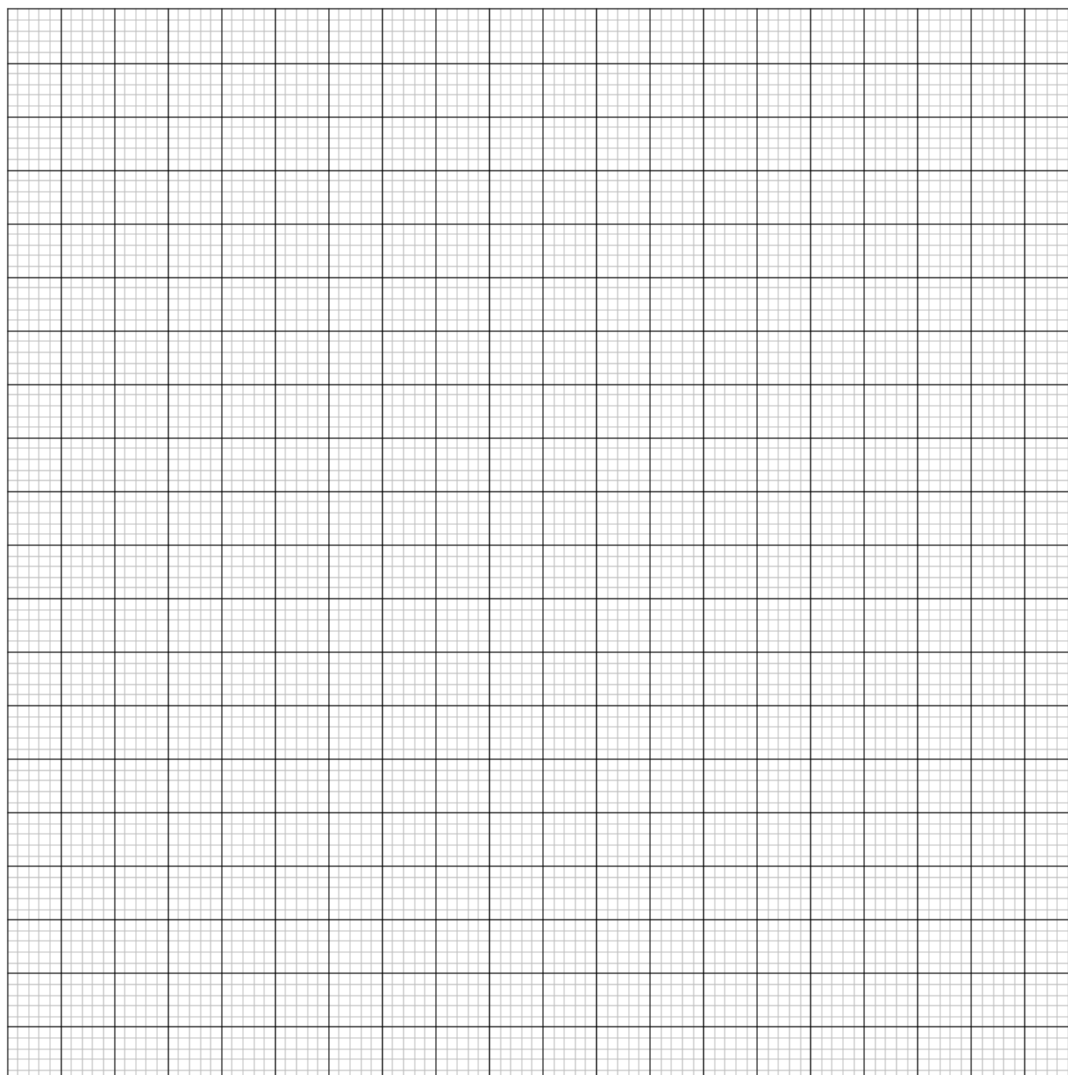
8. **Choose** for which condition(s) the half-life  $t_{1/2}$  corresponding to  $k_{\text{obs}}$  can be expressed as  $t_{1/2} = \frac{\ln 2}{\gamma} (1 + K_c[\text{C}]_0)$  given that  $[\text{C}]_0 \gg [\text{M}_{\text{cis}}]_0$ . Mathematically **justify** your answer with calculations.

- ☐ Very slow isomerisation of  $\text{M}_{\text{cis}}$  within cyclodextrin  
☐ Very slow isomerisation of free  $\text{M}_{\text{cis}}$   
☐  $\text{CM}_{\text{cis}}$  very stable  
☐  $\text{CM}_{\text{trans}}$  very stable

Demonstration:

9. Assuming the condition(s) in task 8 is satisfied, **determine**  $K_c$  by a linear regression using the data below. You may use a calculator or plot a graph.

$[\text{C}]_0$ (mol L <sup>-1</sup> )	$t_{1/2}$ (s)	$[\text{C}]_0$ (mol L <sup>-1</sup> )	$t_{1/2}$ (s)
0	3.0	$3.0 \cdot 10^{-3}$	5.9
$1.0 \cdot 10^{-4}$	3.2	$5.0 \cdot 10^{-3}$	7.7
$5.0 \cdot 10^{-4}$	3.6	$7.5 \cdot 10^{-3}$	9.9
$1.0 \cdot 10^{-3}$	4.1	$1.0 \cdot 10^{-2}$	12.6



Equation of the linear regression:

$$K_c =$$

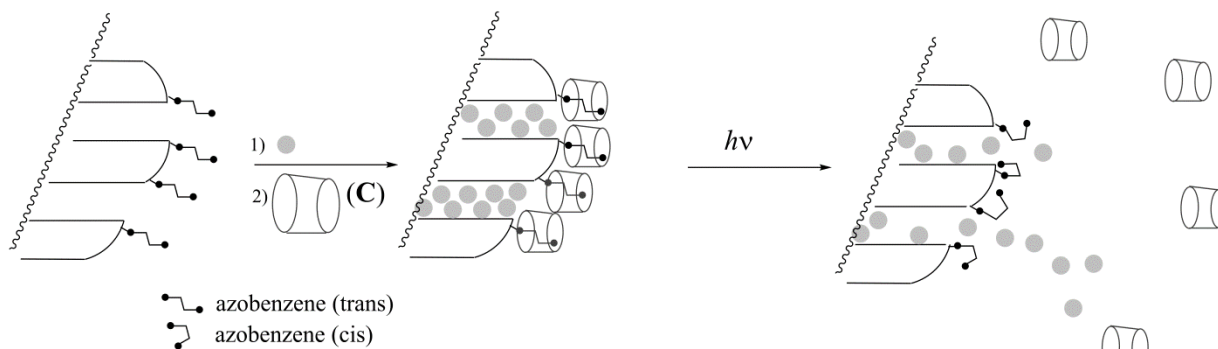
**Formation of nanomachines**

Fig. 5 – Cleavage of an azobenzene–cyclodextrin inclusion complex induced by a light-triggered isomerisation, which allows delivery of a dye (grey circle).

Another azobenzene compound (for which  $K_c \ll K_t$ ), initially in the *trans* form, is covalently grafted onto silica (Fig. 5). The silica pores are filled with a dye (rhodamine B, grey circles in Fig. 5). Upon addition of C, an inclusion complex is formed, which blocks the pores and prevents the release of the dye.

10. **Choose** the most appropriate condition (one choice only) so that the pores are initially blocked in the presence of C, and the dye can be released upon irradiation.

- ☐  $K_t \gg 1$   
☐  $K_t \gg 1$  and  $K_c \ll 1$   
☐  $K_t / K_c \ll 1$   
☐  $K_t \gg 1$  and  $K_c \gg 1$   
☐  $K_c \ll 1$

This azobenzene-silica powder loaded with a dye is placed in the corner of a cuvette (Fig. 6) so that this powder cannot move into solution. The powder is irradiated at a wavelength  $\lambda_1$  to trigger the release of the dye from the pores (Fig. 5). To monitor this release by absorbance spectroscopy we measure the absorbance of the solution at wavelength  $\lambda_2$ .

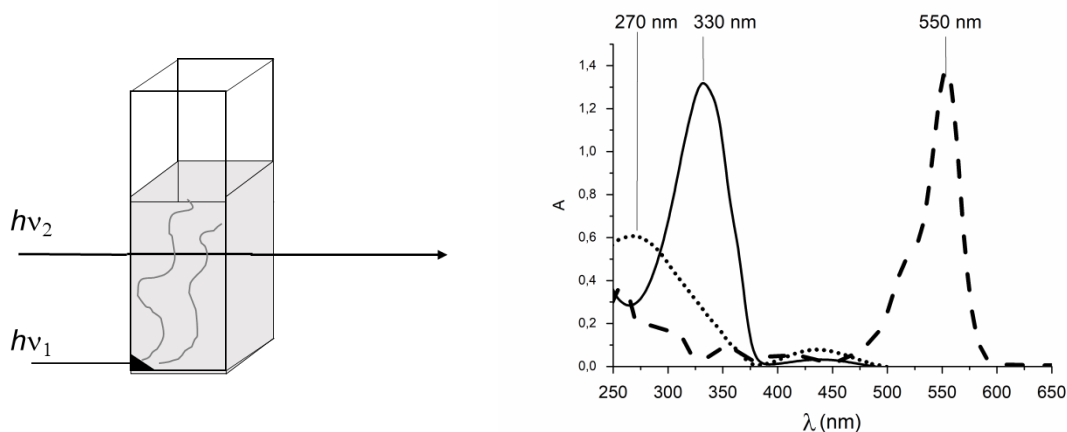


Fig. 6 – Left: experimental setup used to monitor the release of the dye; right: absorption spectra of *trans*-azobenzene (full line), *cis*-azobenzene (dotted line) and rhodamine B (dashed line).

11. **Determine**  $\lambda_1$ .

$\lambda_1 =$             nm

12. **Determine**  $\lambda_2$ .

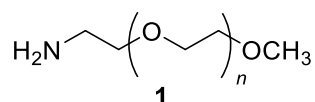
$\lambda_2 =$                   nm

Problem	Question	1	2	3	4	5	6	7	8	9	Total
<b>T6</b>	Points	4	4	5	3	10	2	9	6	5	48
<b>8%</b>	Score										

## Problem T6: Characterisation of a block-copolymer

Block-copolymers, obtained by linking different polymers (blocks), have unique properties, such as the ability to self-assemble. In this problem, the synthesis and characterisation of such a macromolecule are studied.

### Study of the first block



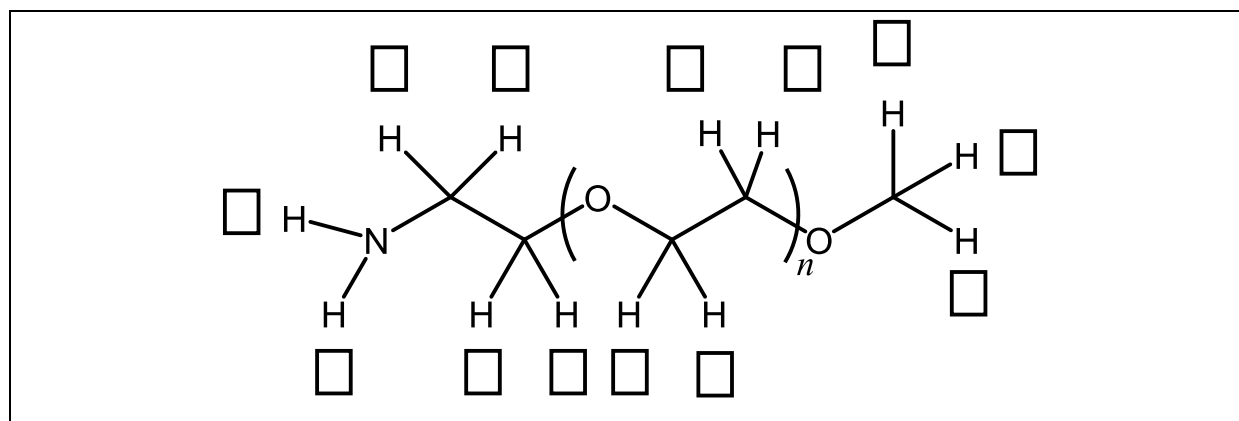
In this first part, we will study the water soluble homopolymer **1** ( $\alpha$ -methoxy- $\omega$ -aminopolyethyleneglycol).

The  $^1\text{H}$  NMR spectrum of **1** ( $\text{DMSO}-d_6$ ,  $60^\circ\text{C}$ , 500 MHz) includes the following signals:

Index	$\delta$ (ppm)	Peak Area
a	2.7*	0.6
b	3.3	0.9
c	3.4	0.6
d	$\sim 3.5$	133.7

Table 1, \*in the presence of  $\text{D}_2\text{O}$ , the signal at 2.7 ppm disappears.

1. **Match** the  $^1\text{H}$  NMR signals (a, b, c, d) from Table 1 with each of the corresponding protons.





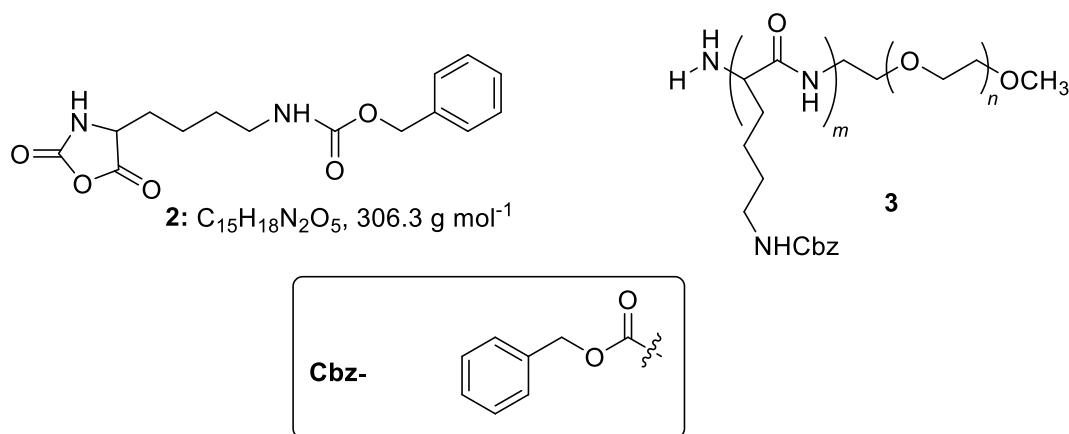
2. **Express** the average degree of polymerisation  $n$  as a function of the area  $A_{\text{OC}_2\text{H}_4}$  of the NMR peak of the repeating unit and the area  $A_{\text{OCH}_3}$  of the NMR peak of the methyl end group. **Calculate**  $n$ .

$$n =$$

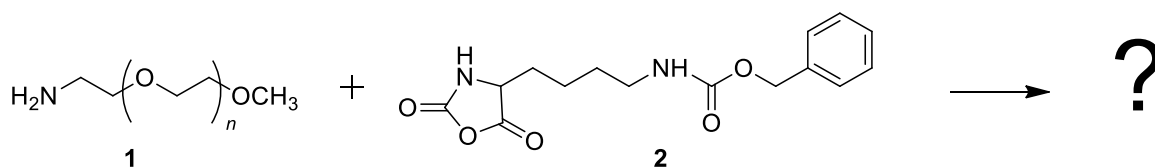
*If you could not calculate  $n$ , the value  $n = 100$  can be used in the rest of the problem.*

### Study of a diblock-copolymer

The synthesis of the second block of the copolymer is achieved through the reaction of **1** with **2** ( $\epsilon$ -(benzyloxycarbonyl)-lysine  $N$ -carboxyanhydride). This yields the block-copolymer **3**.

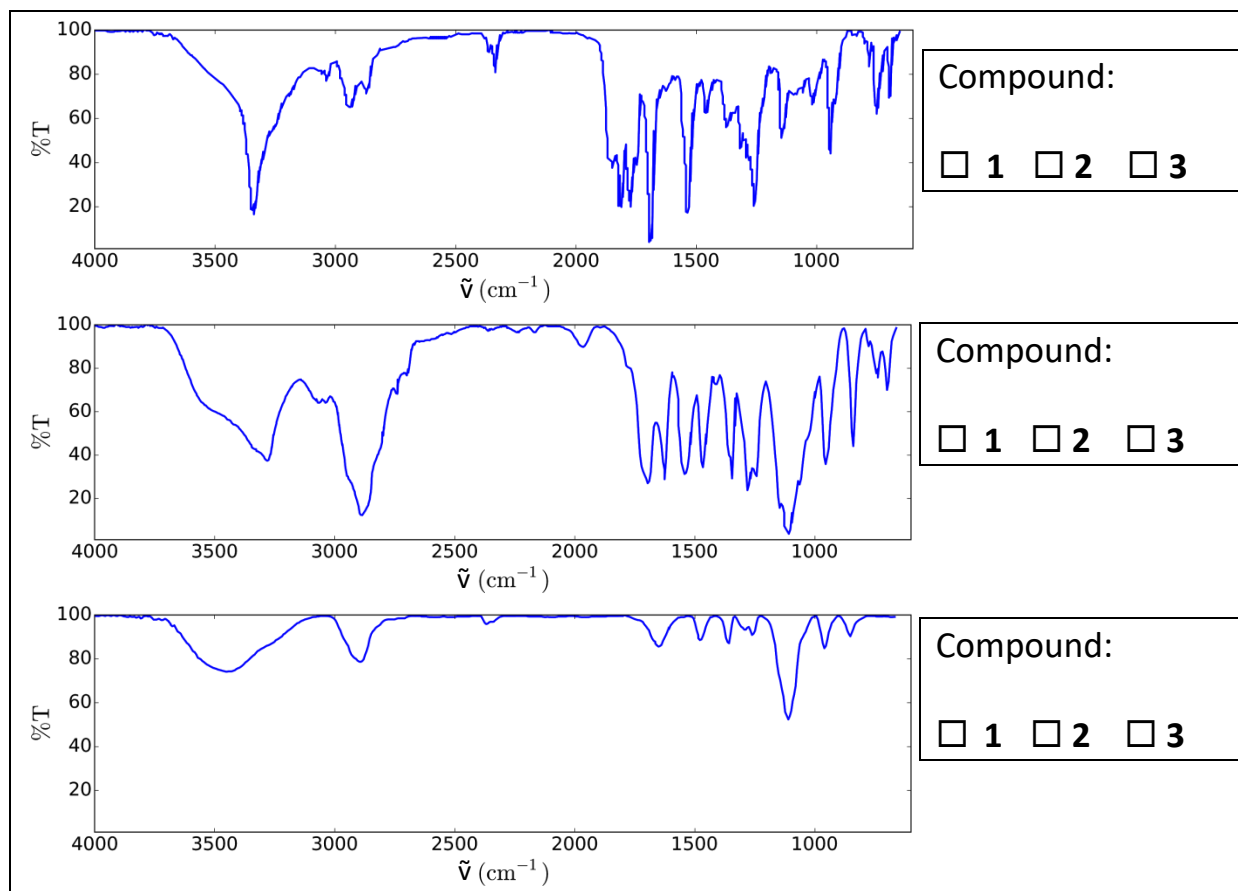


3. **Draw** the reaction intermediate that is formed in the first step of the addition of **1** to **2**. The second step of the mechanism leads to the formation of a gas molecule, **G**. **Draw** its structure.



**G:**

4. Infrared (IR) measurements were performed to characterise the compounds. **Match** the three IR spectra with compounds **1**, **2** and **3**.



5. The  $^1\text{H}$  NMR spectrum of copolymer **3** (in  $\text{DMSO-}d_6$ , at 60 °C, 500 MHz) is reported in Fig. 1. Using some or all of the NMR signals, the areas of which are reported in Table 2, **calculate** its number average molar mass  $M_n$ , considering  $n$  from question 2. For your calculations, **draw** a circle around the group(s) of atoms you used and **give** their corresponding symbol(s) ( $\alpha$ ,  $\beta$ ...).

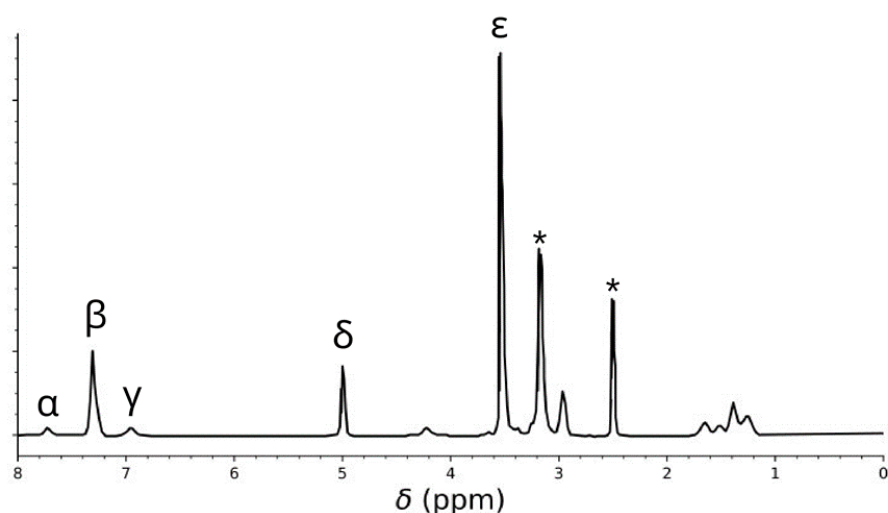
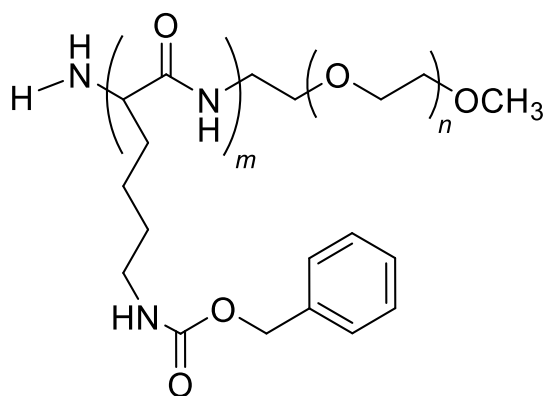


Table 2

Peak	Area
$\alpha$	22.4
$\beta$	119
$\gamma$	23.8
$\delta$	47.6
$\epsilon$	622

Fig. 1 – signals marked with \* correspond to the solvent and water.



$M_n =$  kg mol<sup>-1</sup>  
Provide your answer to two decimal places.

This reaction of **1** with **2** yielded the copolymers **3a** after 20 h, **3b** after 25 h and **3c** after 30 h of reaction at 40 °C. Results of size-exclusion chromatography (SEC) experiments are presented in Fig. 2.

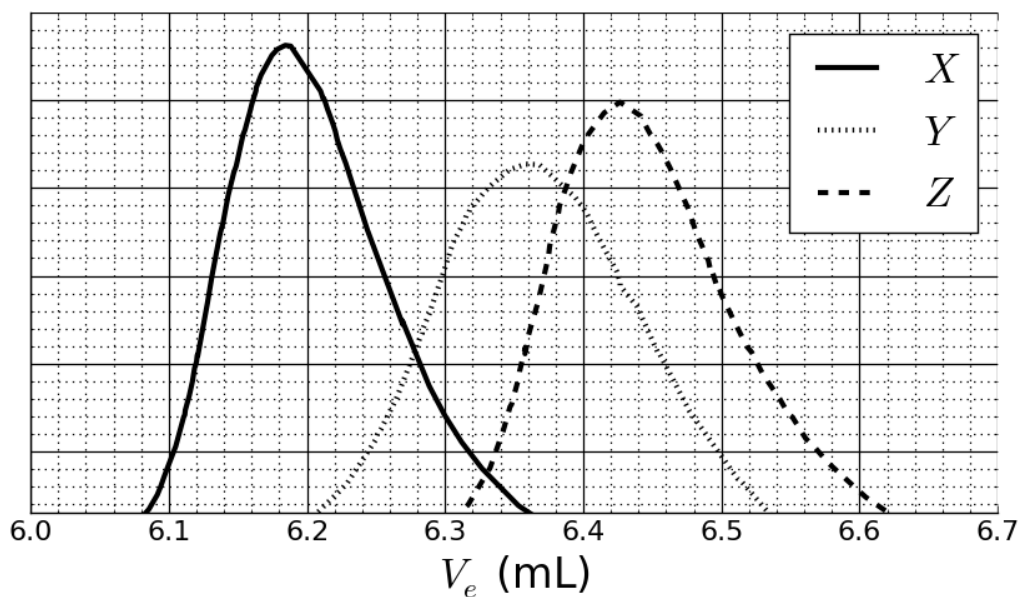


Fig. 2 – SEC chromatograms of **3a**, **3b** and **3c** as a function of the elution volume,  $V_e$ .

6. **Match** the signals in Fig. 2 with the copolymers **3a**, **3b** and **3c**.

<b>3a:</b>	<input type="checkbox"/> X	<input type="checkbox"/> Y	<input type="checkbox"/> Z
<b>3b:</b>	<input type="checkbox"/> X	<input type="checkbox"/> Y	<input type="checkbox"/> Z
<b>3c:</b>	<input type="checkbox"/> X	<input type="checkbox"/> Y	<input type="checkbox"/> Z

In order to calibrate the chromatogram, a mixture of standard polymers of known molar masses (3, 30, 130, 700 and 7000  $\text{kg mol}^{-1}$ ) has been studied (Fig. 3).

The log value of the molar mass is a linear function of the elution volume,  $V_e$ .

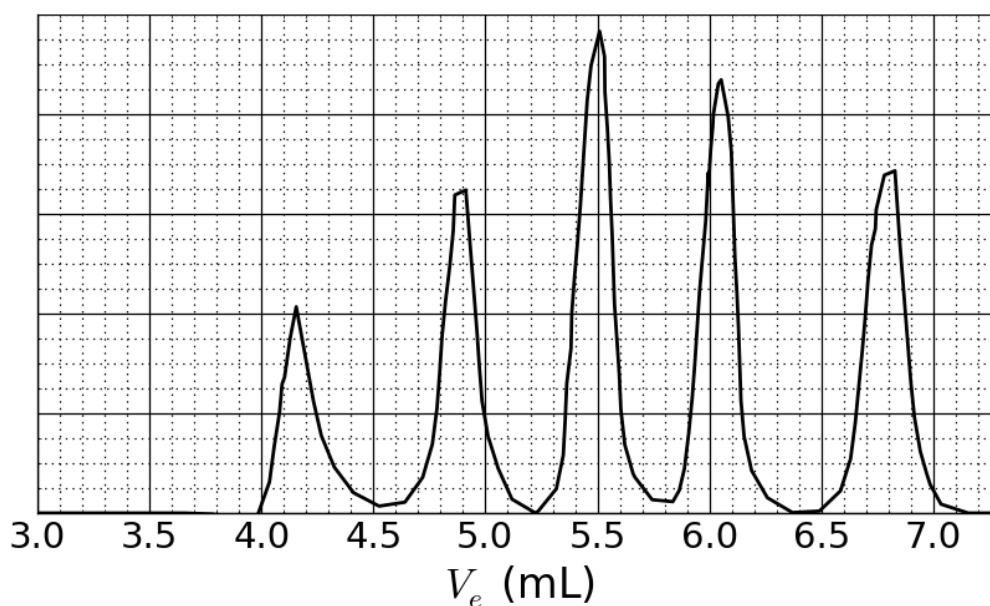
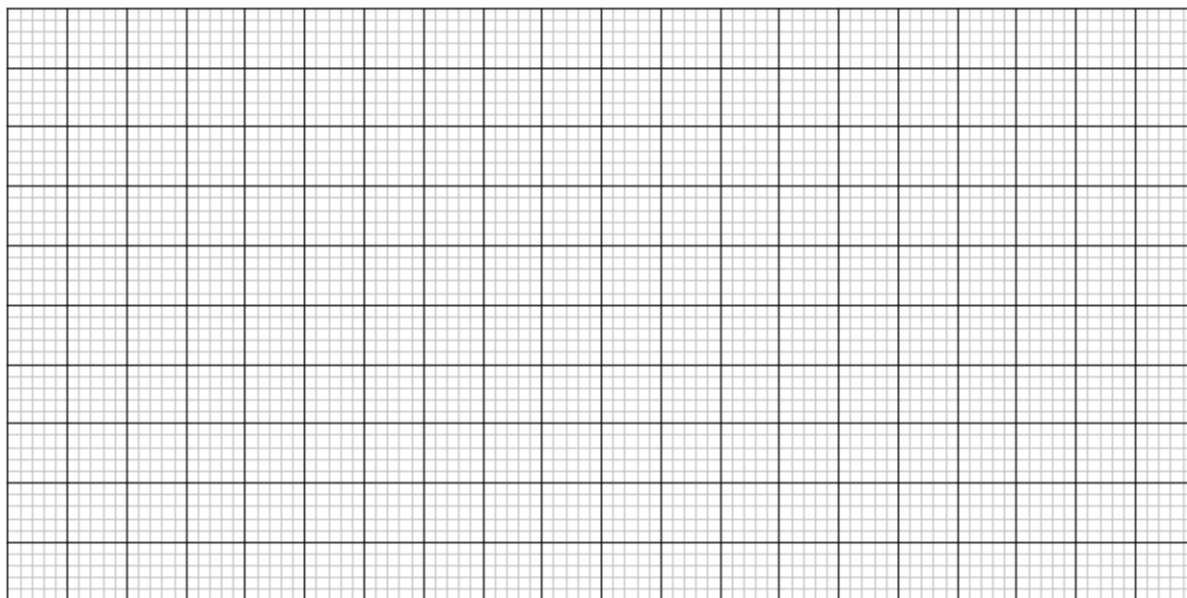


Fig. 3 – SEC chromatogram of the mixture of standards.

7. Based on the SEC curves in Fig. 2 and 3, **determine**  $V_e$  of the polymer that corresponds to curve X and use it to **estimate** the degree of polymerisation  $m$  of its second block. **Detail** your calculation; you may use a calculator or plot a graph.

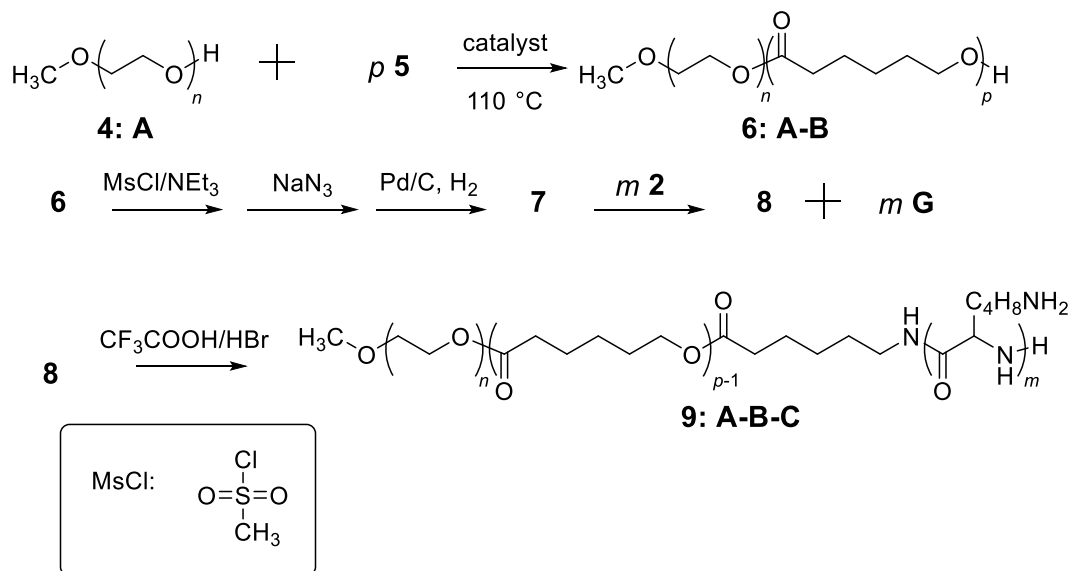
$V_e =$  mL



$m =$

## Triblock copolymer synthesis

For biological applications, involving the formation of micelles, a triblock copolymer **9** can be synthesised through the introduction of a middle block, **B**, using monomer **5**.



8. **Draw** the structures of **5**, **7** and **8**.




**5** (no other products than **6:A-B** are obtained)

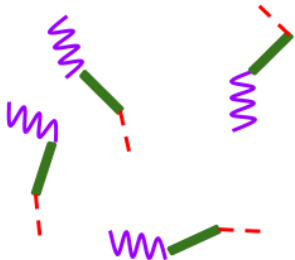
**7** (a gas is formed in the final step)

**8**

9. Amphiphilic block copolymers, such as **9: A-B-C**, can be used for medical applications, as they self-assemble into micelles in water (pH = 7), which can be used as drug carriers. Assign each block of the copolymer to a property. Draw a scheme of the micelle with only 4 polymer chains.

<b>A:</b>	<input type="checkbox"/> hydrophobic	<input type="checkbox"/> hydrophilic
<b>B:</b>	<input type="checkbox"/> hydrophobic	<input type="checkbox"/> hydrophilic
<b>C:</b>	<input type="checkbox"/> hydrophobic	<input type="checkbox"/> hydrophilic

**A**          **B**          **C**    



$\rightleftharpoons$

## Problem T7: Ring motion in a [2]catenane

Problem	Question	1	2	3	4	5	6	7	8	9	10	11	Total
<b>T7</b>	Points	4	12	2	2	2	5	5	8	4	5	5	54
<b>6%</b>	Score												

In 2016, the Nobel Prize in Chemistry was awarded to J.-P. Sauvage, Sir J. F. Stoddart and B. L. Feringa "for the design and synthesis of molecular machines". An example of these is [2]catenane, a molecule consisting of two interlocked rings. In this system, one macrocycle contains a single phenanthroline (bidentate) ligand and the second contains two ligands: a phenanthroline and a terpyridine (tridentate) ligand. A copper ion is coordinated by one ligand from each macrocycle. Depending on the oxidation state of the copper (+I or +II), two configurations are obtained (Fig. 1).

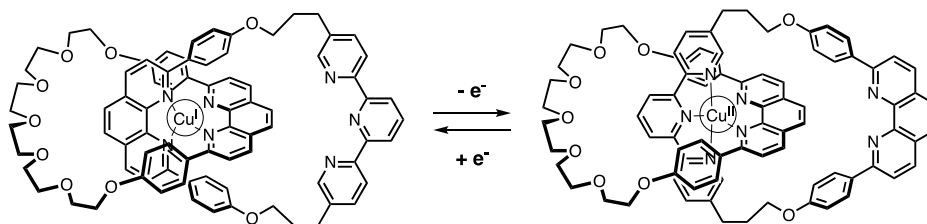
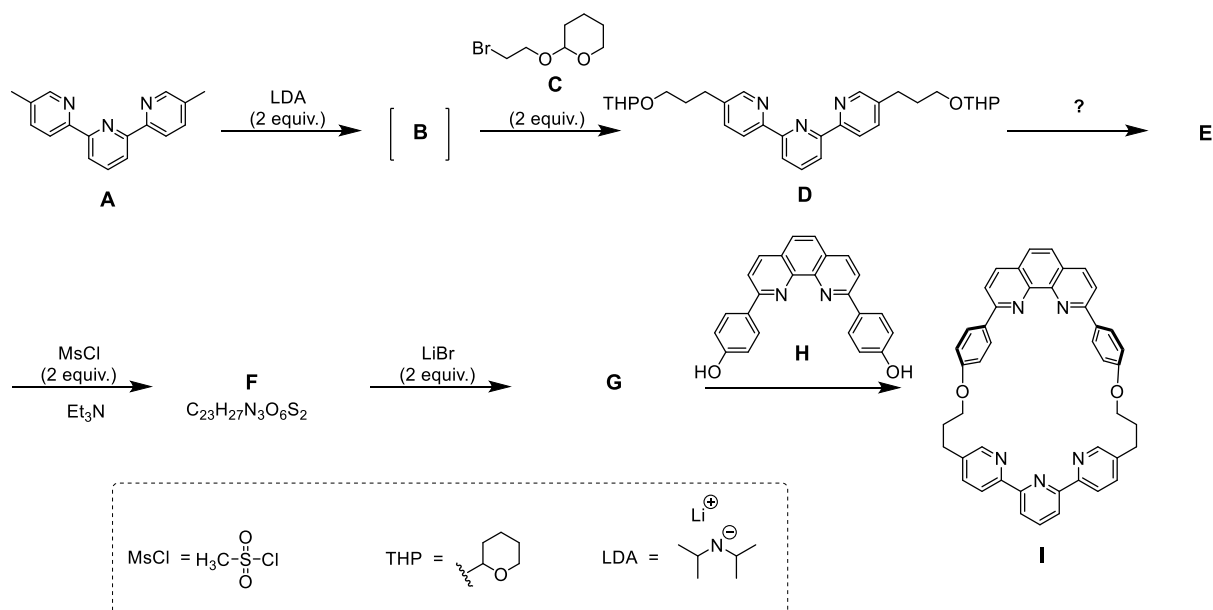


Fig. 1 – Multi-stability of a ring in a [2]catenane.

The synthesis of the macrocycle is as follows:



1. **Draw** the structure of **B**.

**B**



2. **Draw** the structures of **E**, **F** and **G**.

**E**

**F**

**G**

3. From the following the reaction conditions, **choose** which one(s) can produce **E** from **D**:

- ☐  $\text{H}^+$ ,  $\text{H}_2\text{O}$
- ☐  $\text{OH}^-$ ,  $\text{H}_2\text{O}$
- ☐  $\text{NaBH}_4$ ,  $\text{CH}_3\text{OH}$
- ☐  $\text{H}_2$ ,  $\text{Pd/C}$ , THF

4. In this synthetic strategy,  $\text{MsCl}$  is used to obtain:

- ☐ a leaving group
- ☐ a protecting group
- ☐ a deactivating group
- ☐ a directing group

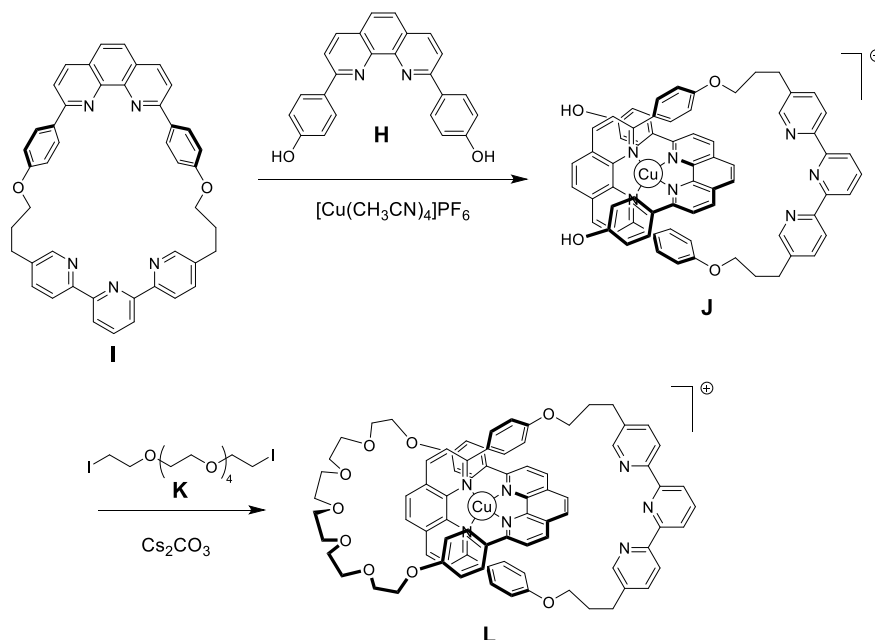
5. **G** is obtained by the reaction between **F** and  $\text{LiBr}$  in acetone. This reaction is:

- ☐ electrophilic aromatic substitution
- ☐ nucleophilic aromatic substitution
- ☐  $\text{S}_{\text{N}}1$
- ☐  $\text{S}_{\text{N}}2$

6. **Draw** the transition state of the rate-determining (slow) step of the reaction  $\mathbf{F} \rightarrow \mathbf{G}$ , showing the 3D geometry. Show only one reaction centre. The main carbon chain can be represented as an R group.

Transition state:

The synthesis of [2]catenane **L** uses the template effect of a copper complex:



7. **Write** the full electronic configuration of Cu(0) in its ground state. Give the oxidation state of Cu in complex **J** and write the electronic configuration of Cu in the free ion corresponding to **J**.

---

Electronic configuration of Cu(0):

---

Oxidation state of Cu in **J**:

Electronic configuration of Cu in the free ion in J:

8. **Select** the geometry of the copper ion in **L**. Assuming an ideal geometry of the ligands around the copper centre, **draw** the electronic levels of the d orbitals subject to the crystal field. **Fill** the crystal field splitting diagram with electrons. **Give** the maximum value of the spin ( $S$ ) for this complex.

The geometry of Cu in **L** is:

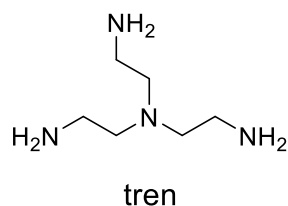
- ☐ Octahedral  
☐ Tetrahedral  
☐ Square planar  
☐ Trigonal bipyramid

Splitting diagram and filling of d orbitals:

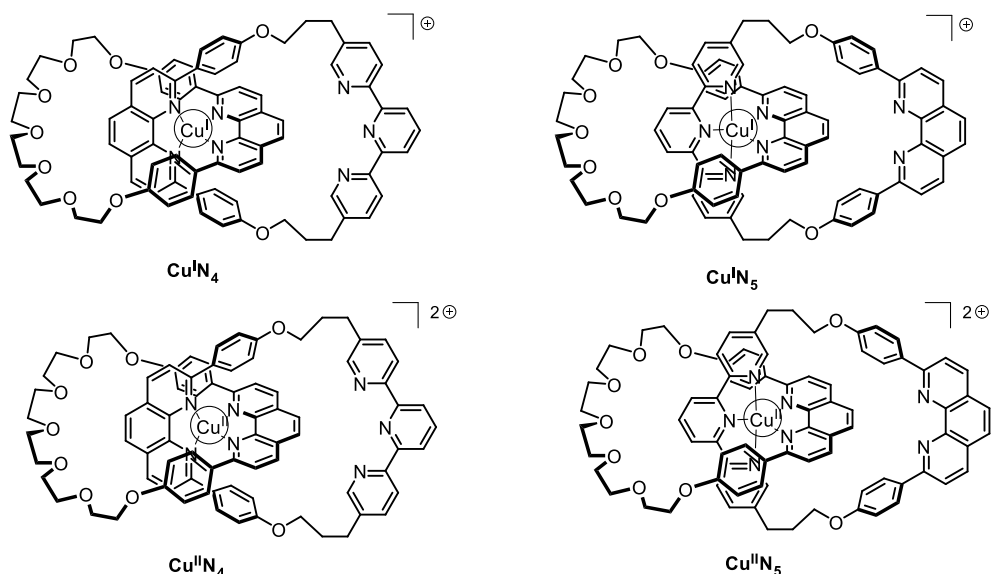
$$S =$$

9. From the following compounds, **choose** the one(s) that can remove the copper ion in **L** to obtain the free [2]catenane:

- ☐  $\text{CH}_3\text{CN}$   
☐  $\text{NH}_4\text{PF}_6$   
☐  $\text{KCN}$   
☐ tren



In [2]catenane **L**, the copper ion can exist in two oxidation states (+I) or (+II), and each of them exhibits a different coordination sphere (tetra- or penta-coordinated, respectively).




The stability of Cu(I) complexes can be inferred by comparing their electronic structures to that of a noble gas.

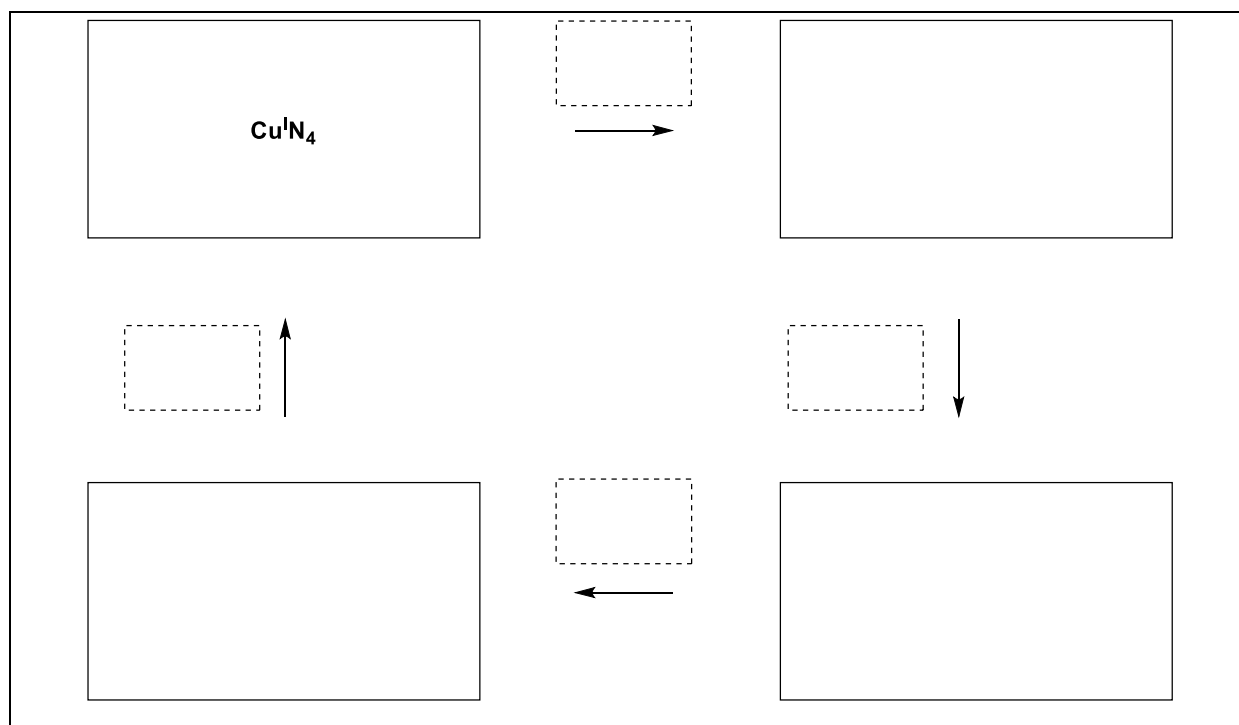
10. **Fill** in the blanks with a number or a tick:

The  $\text{Cu}^{\text{I}}\text{N}_4$  complex has ... electrons in the coordination sphere of the metal.

The  $\text{Cu}^{\text{I}}\text{N}_5$  complex has ... electrons in the coordination sphere of the metal.

The  $\text{Cu}^{\text{I}}\text{N}_4$  complex is ☐ more / ☐ less stable than the  $\text{Cu}^{\text{I}}\text{N}_5$  complex.

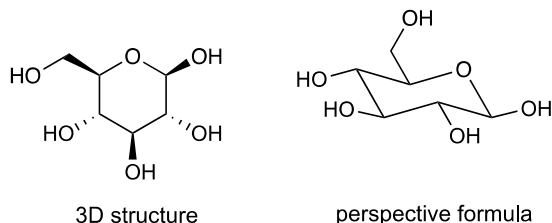
11. **Fill** in the solid boxes by identifying the complexes involved from Fig. 2 (*i.e.*  $\text{Cu}^{\text{II}}\text{N}_4$ ,  $\text{Cu}^{\text{I}}\text{N}_5$  and  $\text{Cu}^{\text{II}}\text{N}_5$ ) and **complete** the sequence to achieve electrochemical control of the system using the following notation for the dashed boxes:  (rotation);  $+e^-$ ;  $-e^-$ .



Problem	Question	1	2	3	4	5	6	7	8	9	10	11	12	13	14	15	Total
<b>T8</b>	Points	2	6	2	2	11	2	4	3	4	2	6	8	2	6	4	64
<b>6%</b>	Score																

## Problem T8: Identification and synthesis of inositols

In this problem, we define “3D structure” and “perspective formula” as indicated for  $\beta$ -glucose in the following figure.



Inositols are cyclohexane-1,2,3,4,5,6-hexols. Some of these 6-membered carbocycles, in particular *myo*-inositol, are involved in a number of biological processes.

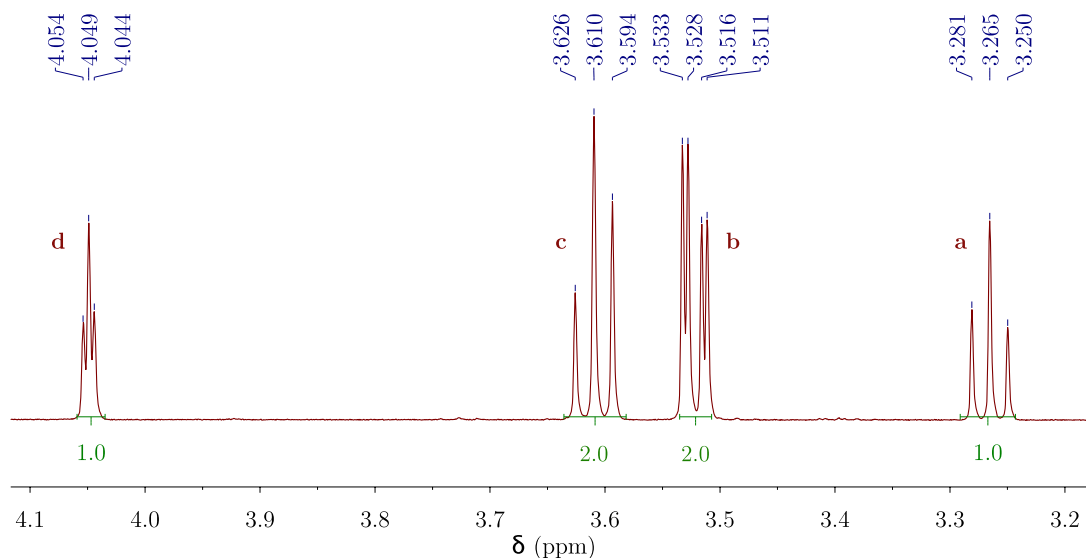
### Structure of *myo*-inositol

1. **Draw** the structural formula of inositols, without stereochemical details.

This family of molecules contains 9 different stereoisomers, including enantiomers.

2. **Draw** all 3D structures of the stereoisomers that are optically active.

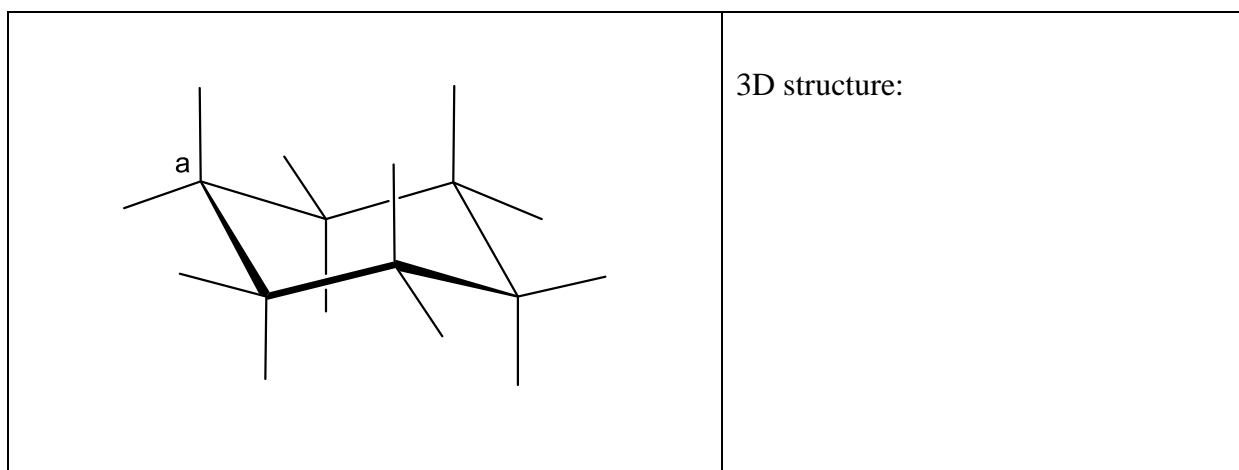
The structure of a specific inositol, called *myo*-inositol, is studied here. Only one of its chair conformers is predominant and its structure can be deduced from its  $^1\text{H}$  NMR spectrum. The spectrum below was obtained at 600 MHz in  $\text{D}_2\text{O}$ . No other signal from that compound was observed in the spectrum. The integration is indicated on the spectrum below each signal.



3. **Give** the molecular formula of the predominant compound derived from *myo*-inositol that is consistent with the number of protons observed in the  $^1\text{H}$  NMR spectrum of this sample.

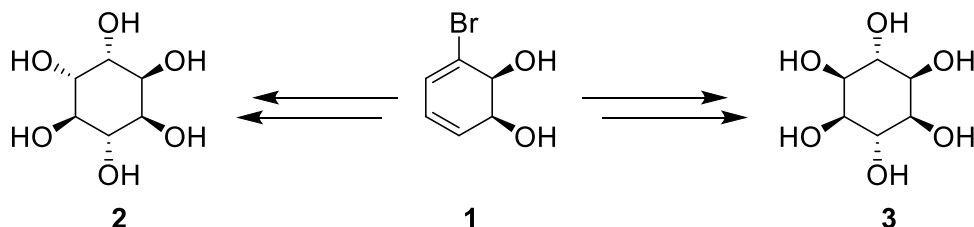
4. Based on the number of the proton signals and their integrations, **give** the number of symmetry plane(s) that exist(s) in this molecule.

5. **Complete** the following perspective drawing of the most stable conformation of *myo*-inositol. Then **label** each hydrogen with the corresponding letter (**a**, **b**, **c** or **d**) according to the NMR spectrum above. Proton **a** must be on carbon **a** on the following representation. **Draw** its 3D structure.



## Synthesis of inositols

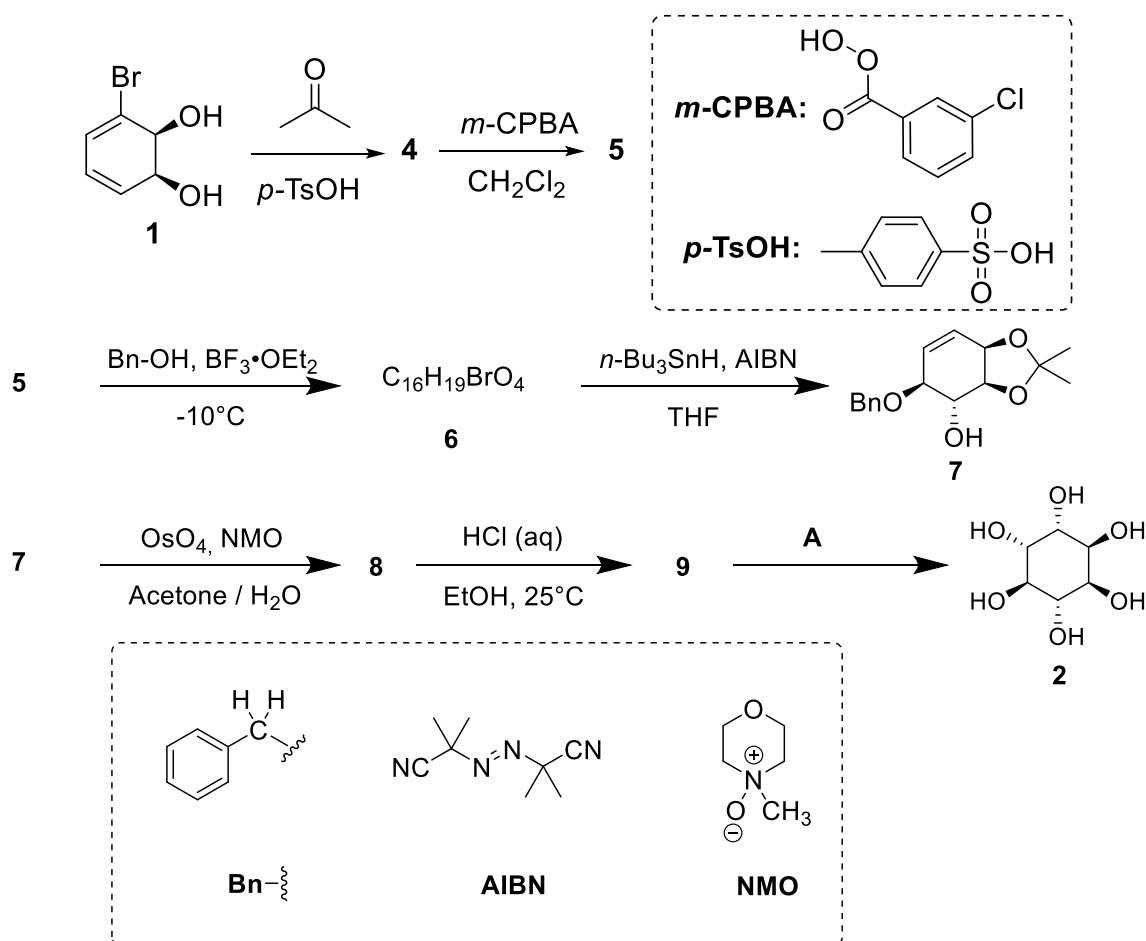
For medicinal applications, it is useful to synthesise some inositol phosphates on a large scale. We will study the synthesis of inositol **2** from bromodiol **1**.



6. **Choose** the correct structural relationship(s) between **2** and **3**.

- ☐ enantiomers  
☐ epimers  
☐ diastereomers  
☐ atropoisomers

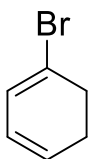
Inositol **2** can be obtained from compound **1** in 7 steps.



7. **Draw** the 3D structure of **4**.

**4**

8. The reaction leading to **5** occurs on the double bond with the highest electron density. Consider the structure of 1-bromo-1,3-cyclohexadiene shown below, which is a substructure of **4**. **Circle** the double bond with the highest electron density. On separate structures, **represent** all the electronic effects caused by the bromine.



9. **Draw** the 3D structure of the major diastereomer **5**.

**5**

10. **Give** the total number of stereoisomers of **5** possibly obtained by this synthesis, starting from the enantiopure compound **1**.

11. For the step **5**  $\rightarrow$  **6**, another product with the same molecular formula, denoted **6'**, can be produced. **Draw** the 3D structures of **6** and **6'**.

**6**

**6'**



12. **Draw** the 3D structures of major diastereomers **8** and **9**.

<b>8</b>	<b>9</b>
----------	----------

13. **Select** the right set(s) of conditions **A** to obtain **2**.

- ☐ H<sub>2</sub>, Pd/C  
☐ K<sub>2</sub>CO<sub>3</sub>, HF  
☐ HCOOH, H<sub>2</sub>O  
☐ BF<sub>3</sub>·OEt<sub>2</sub>

14. If the bromine is not present in compound **1**, in addition to **2**, another stereoisomer would be obtained. Considering that the stereoselectivity of the reactions that take place in the synthesis remains unchanged and that the following steps involve the same number of equivalents as for **2**, **draw** the 3D structure of this stereoisomer and **give** its relationship with **2**.

- ☐ enantiomers  
☐ epimers  
☐ diastereoisomers  
☐ atropoisomers

15. For the synthesis of **2** from **1**, **choose** the step(s) which correspond to the removal of protecting or directing groups.

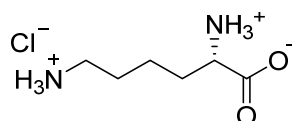
- ☐ **1** → **4**  
☐ **4** → **5**  
☐ **5** → **6**  
☐ **6** → **7**  
☐ **7** → **8**  
☐ **8** → **9**  
☐ **9** → **2**

Problem	Question	1	2	3	4	5	6	7	8	9	10	11	12	13	Total
T9 7%	Points	2	2	4	3	2	17	1	1	2	4	2	2	2	44
	Score														

## Problem T9: Synthesis of levobupivacaine

### Part I.

The local anesthetic bupivacaine (marketed as Marcaine) is on the World Health Organisation List of Essential Medicines. Although the drug is currently used as a racemic mixture, it was demonstrated that one enantiomer of bupivacaine, levobupivacaine, is less cardiotoxic and, therefore, safer than the racemate. Levobupivacaine can be synthesised from the natural amino acid L-lysine.



L-Lysine hydrochloride

1. **Assign** the absolute configuration of the stereogenic centre in L-lysine hydrochloride and **justify** your answer by classifying the substituents in order of their priority.

Configuration:	Priority 1 > 2 > 3 > 4:
<input type="checkbox"/> <i>R</i> <input type="checkbox"/> <i>S</i>	

2. The prefix L in L-lysine refers to relative configuration. **Choose** all correct statements:

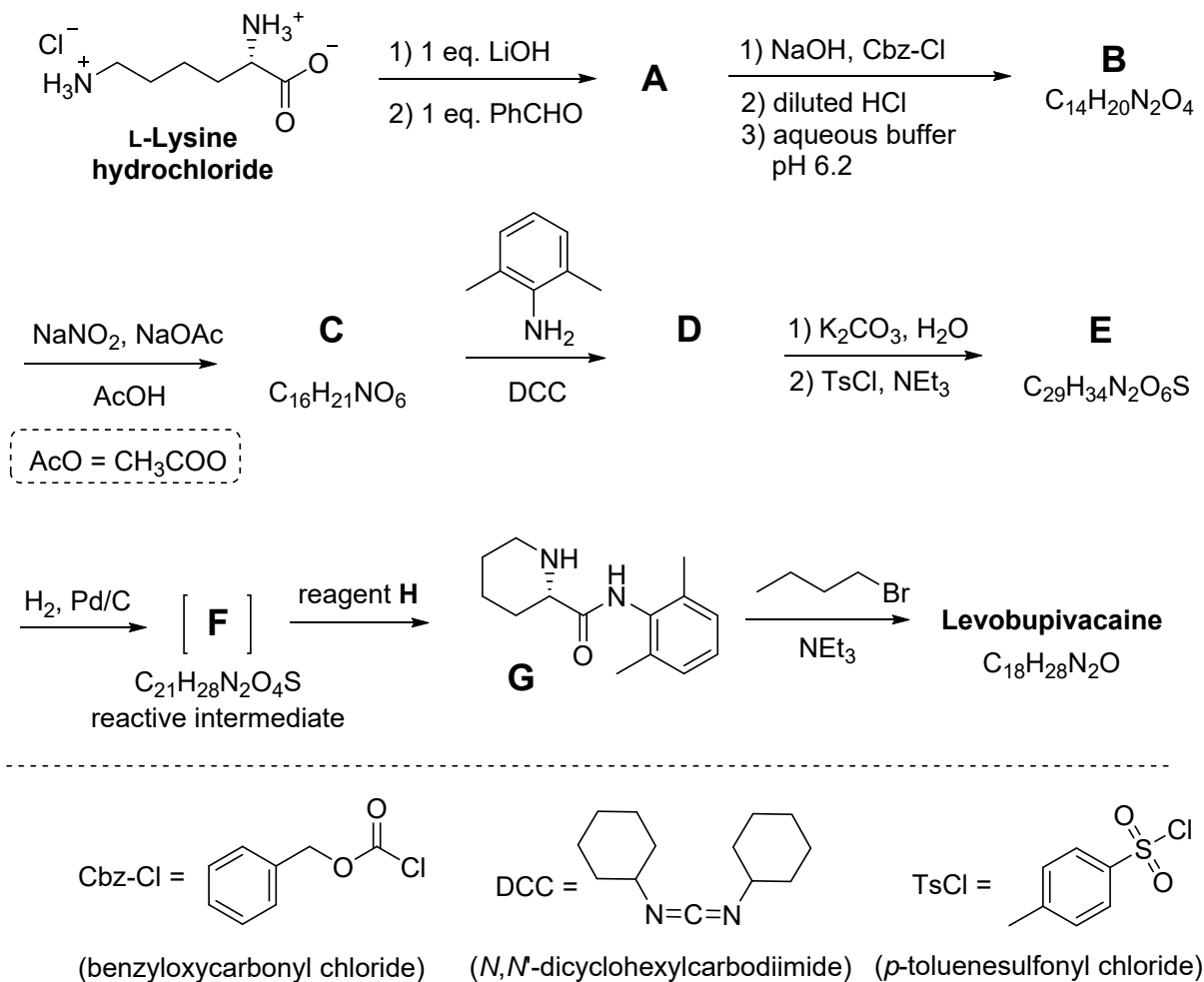
- ☐ All natural L-amino acids are levorotatory.  
☐ Natural L-amino acids can be levorotatory or dextrorotatory.  
☐ All natural L-amino acids are (*S*).  
☐ All natural L-amino acids are (*R*).

Often, we want only one of the amino groups in L-lysine to react. A  $\text{Cu}^{2+}$  salt with excess aqueous hydroxide can selectively mask the reactivity of one of the amino groups. After the complex is formed, only the non-complexed  $\text{NH}_2$  group is available to react.

3. Considering that L-lysine acts as a bidentate ligand and that two molecules of L-lysine coordinate to one  $\text{Cu}^{2+}$  ion in the presence of aqueous hydroxide, **draw** the structure of the intermediate complex.

Complex

Fortunately, in the synthesis of levobupivacaine shown below, the same amino group reacts even without the use of  $\text{Cu}^{2+}$  salt.



From this point on, you can use the abbreviations proposed in the scheme above.

4. **Draw** the structure of compound **A**, including the appropriate stereochemistry.

**A**

5. Transformation of L-lysine into **A** is (**choose** the correct answer(s)):

- ☐ an enantioselective reaction.  
☐ an enantiospecific reaction.  
☐ a regioselective reaction.

6. **Draw** the structures of compounds **B–F**, including the appropriate stereochemistry.

<b>B</b> $C_{14}H_{20}N_2O_4$	<b>C</b> $C_{16}H_{21}NO_6$
<b>D</b>	<b>E</b> $C_{29}H_{34}N_2O_6S$
<b>F</b> $C_{21}H_{28}N_2O_4S$	

7. What is the role of DCC in the transformation **C**  $\rightarrow$  **D**?

- |   |
|---|
| <input type="checkbox"/> Protecting group for the amino group.<br><input type="checkbox"/> Protecting group for the hydroxy group.<br><input type="checkbox"/> Activating agent for the amide bond formation. |
|---|

8. TsCl is used in the synthesis to enable:

- |  |
|--|
| <input type="checkbox"/> Nucleophilic substitution of an amino group.<br><input type="checkbox"/> Electrophilic substitution of an amino group.<br><input type="checkbox"/> Nucleophilic substitution of a hydroxy group.<br><input type="checkbox"/> Electrophilic substitution of a hydroxy group. |
|--|

9. **Mark** all possible reagents which could be used as reagent **H**:

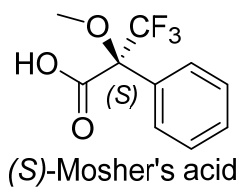
- |   |   |
|---|---|
| <input type="checkbox"/> diluted HCl                    | <input type="checkbox"/> Zn/HCl                         |
| <input type="checkbox"/> K <sub>2</sub> CO <sub>3</sub> | <input type="checkbox"/> H <sub>2</sub> SO <sub>4</sub> |
| <input type="checkbox"/> diluted KMnO <sub>4</sub>      | <input type="checkbox"/> diluted NaOH                   |
| <input type="checkbox"/> SOCl <sub>2</sub>              | <input type="checkbox"/> PCl <sub>5</sub>               |

10. **Draw** the structure of levobupivacaine, including the appropriate stereochemistry.

Levobupivacaine C<sub>18</sub>H<sub>28</sub>N<sub>2</sub>O

## Part II.

The synthesis of levobupivacaine requires the use of enantiomerically pure L-lysine. A common method to confirm the enantiomeric purity of aminoacids is their transformation into amides using Mosher's acid (see the structure of the (*S*) isomer below).



11. **Draw** the structure of the amide formed when the  $\alpha$ -amino group of L-lysine is derivatised with (*S*)-Mosher's acid. Clearly show the stereochemistry of each chiral centre.

12. **How many products** will be formed from racemic lysine and (*S*)-Mosher's acid (note that only the  $\alpha$ -amino group of lysine is derivatised)?

- |  |
|--|
| <input type="checkbox"/> Two diastereoisomers.                                     |
| <input type="checkbox"/> Four diastereoisomers.                                    |
| <input type="checkbox"/> A racemic mixture of two enantiomers.                     |
| <input type="checkbox"/> Four compounds: two enantiomers and two diastereoisomers. |

13. **Choose** the method(s) which can be used to quantitatively determine the enantiomeric purity of lysine after its derivatisation with (*S*)-Mosher's acid:

- |   |
|---|
| <input type="checkbox"/> NMR spectroscopy.      |
| <input type="checkbox"/> Liquid chromatography. |
| <input type="checkbox"/> Mass spectrometry.     |
| <input type="checkbox"/> UV-vis spectroscopy.   |